



# Financial Statements

*Date: April 2021*

PARKWAY SCHOOL DISTRICT  
MONTHLY FINANCIAL REPORT  
TABLE OF CONTENT

<b><u>DOCUMENT</u></b>	<b><u>PAGE</u></b>
EXECUTIVE SUMMARY. . . . .	1 - 2
GRAPHS - REVENUE, EXPENDITURE, CASH, AND FUND BALANCE .	3 - 5
RECAPITULATION OF FUNDS . . . . .	6
ACCRUAL BALANCE SHEET. . . . .	7
BREAKOUT OF CASH AND INVESTMENTS . . . . .	8
GRANTS FROM CARES ACT : COVID-19 . . . . .	9
MODIFIED ACCRUAL REVENUE SCHEDULE . . . . .	10
EXPENDITURE SUMMARY BY OBJECT . . . . .	11
FOOD SERVICE . . . . .	12
EXPENDITURE SUMMARY BY BUILDING . . . . .	13
EXPENDITURE SUMMARY BY PROGRAM . . . . .	14 - 21
GLOSSARY . . . . .	22 - 23
PURCHASING REPORTS . . . . .	24 – 37



TO: Board of Education

DATE: June 16, 2021

FROM: Patricia Bedborough, CPA

RE: Executive Summary April 2021

#### Abstract

The April financial statements are attached. Just as a reminder, you will notice a remarkable decrease in the local food service revenues. With the approval of the Seamless Summer Option and the free lunch and breakfast for all students, we will have very little local revenue for food services. The funding for this program will be received as federal funds. To date, we are running a month delayed in receiving the revenue. Our local revenues received from our property taxes have increased slightly as a percentage of the total year as compared to last year. We are still anticipating the State Tax Commission to meet this spring and begin settlement of protested tax cases. This will impact our collection rate and we are anticipating a reduction. County revenues have decreased year over year. This is mainly due to lower county stock tax. The state foundation formula funding has a proration factor of 93% and is expected to be increased during the year. As noted, the federal revenues expected have increased from prior year based on the food service funding and the other Cares Act funding committed so far.

For the salaries and benefits you will notice a slight decrease from prior year. We have reduced wages for open positions, the voluntary furlough for operations employees and savings in extra duty pay. We also have paid one less salary payment to certified staff as compared to last year. Other expenses including supplies are remarkably less than prior years. Notably, we have reduced spending in fuel, energy and food service supplies. You will also note the reduced spending in substitute services. This is due in large part to our reduced need for subs with the delay of professional development during school hours combined with a reduced fill rate from Kelly Subs.

#### Future Issues

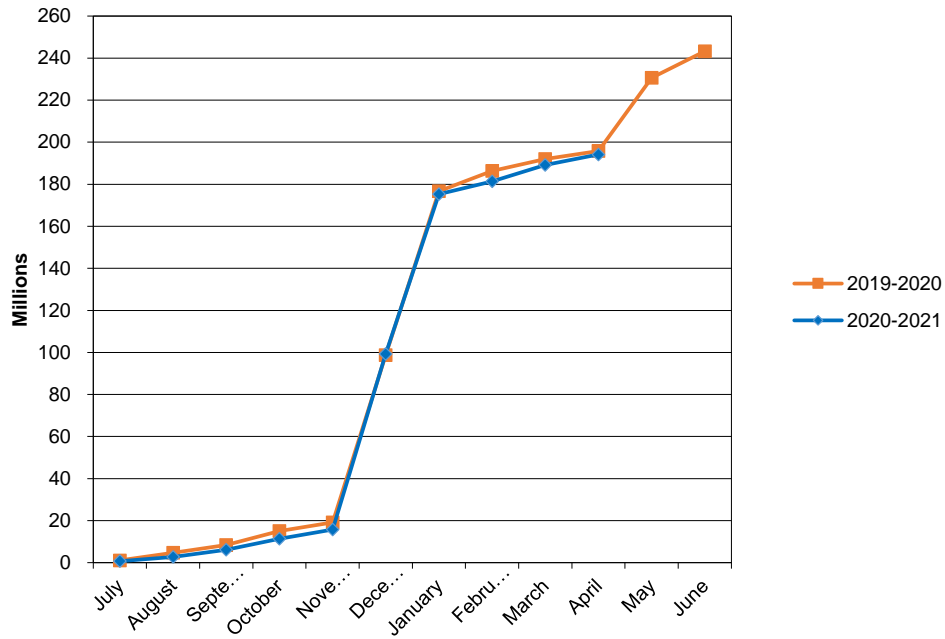
The following issues are still pending and could affect district finances in the future:

1. Health Insurance Costs – Health costs are a large portion of our benefit expenses. Our pharmacy benefit manager is through Business Health Coalition and we have substantial savings over market trends for our pharmacy. We have opened our near site clinics for our employees and staff effective August 2018. We had no increase in our premiums for 2019, 2020 and 2021. Our wellness programs are very strong. We have begun reviewing options for our health care premiums for next year. One of our budget reductions was a 1% decrease in the medical insurance premium.

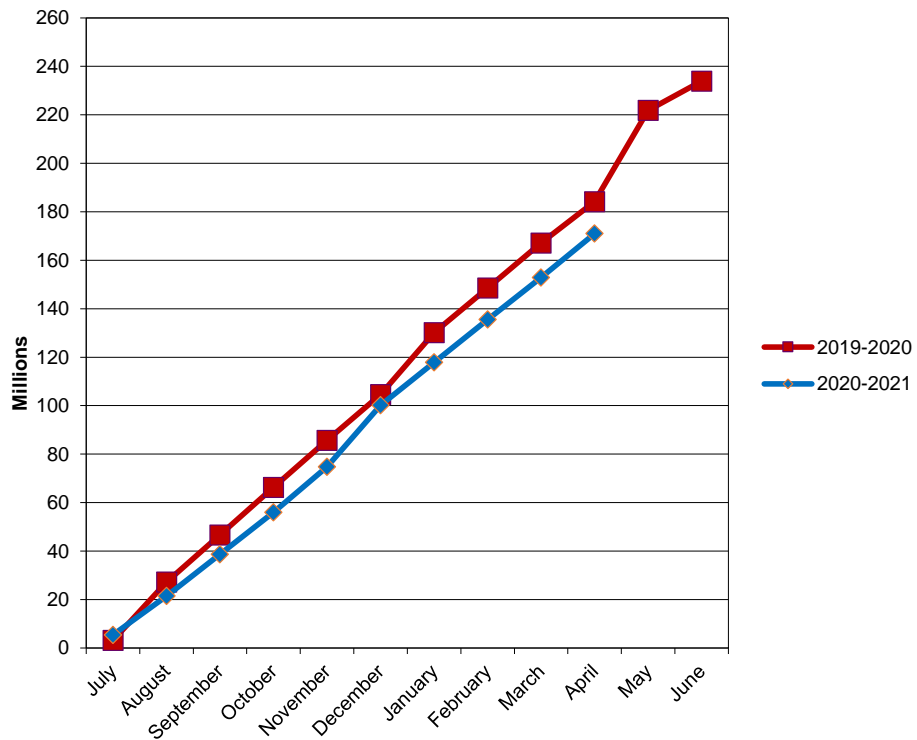
2. Commercial Property Assessments Appeals – As you are aware this has been a struggle over the last several years. We have seen our collection rate fluctuate due to these settlements. We worked with the state auditor’s office last year and have approved \$7.2 million in recoupment. Included in this year we have levied .1326 to the capital projects fund from our prior years’ recoupment calculations. We just received our report from St. Louis County of 2019 payments paid under protest. This amount is just over \$34 million. This is an increase over previous year, but this was a reassessment year. In a meeting with the Assessor in March, he stated that settlements overall are down in St. Louis County mainly due to a reduced amount of backlog. The Tax Commission is also delayed at this time. Currently we have a minimal a negative payment. We have been told that the commission will be meeting in the spring. We do anticipate a catch up of assessment settlements.
3. New Construction Assessments - In September we received our final amounts from St. Louis County. We had another strong year with new construction with just over \$25 million in commercial and residential property. We just received our preliminary assessment data for 2021. We have a growth of 7% in property along with \$6 million in new construction. We use this data to submit a preliminary tax rate. This will all be finalized in September of 2021.
4. Interest Income –Early in the fiscal year interest rates were stabilizing. As we make our investment of funds, we will be able to project an interest income this year. Our interest from our banking account is a much lower rate from last year due to the Fed’s lowering the treasury rate.
5. State Revenue –DESE will be adjusting the State Adequacy Target for the formula revenues. The State Adequacy Target is still well below the amount determined by the original formula legislation. The governor announced in early June that they will be applying a proration rate to all districts for our formula funding. This should improve each month. Last week, the governor announced a release of withholds. We have not received official word that the withhold is entirely gone, but we expect it will be. This has been impacted by the Federal stimulus funding that the state has received. We are concerned that this is providing a false hope of a recovering economy.
6. Spot Market Purchases – For information purposes, fiscal year-to-date purchases under the spot market procurement policy are as follows:

Fuel (Facilities)	\$	55,836.65
Fuel (Trans)	\$	83,442.30
Paper	\$	71,617.20
Trash Liner	\$	10,797.00
Produce:	\$	

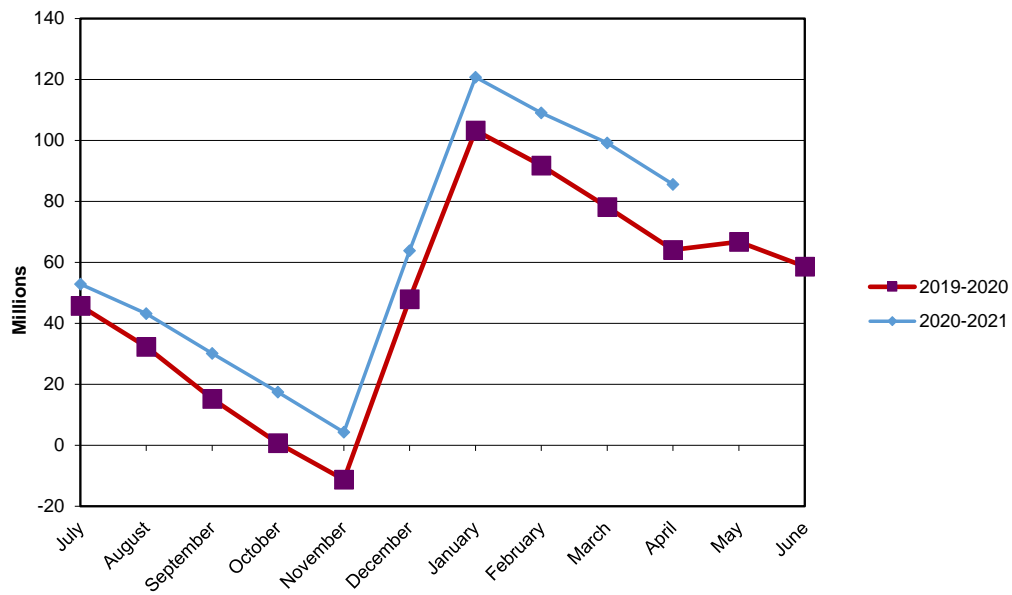
## PARKWAY SCHOOL DISTRICT ACTUAL OPERATING REVENUE

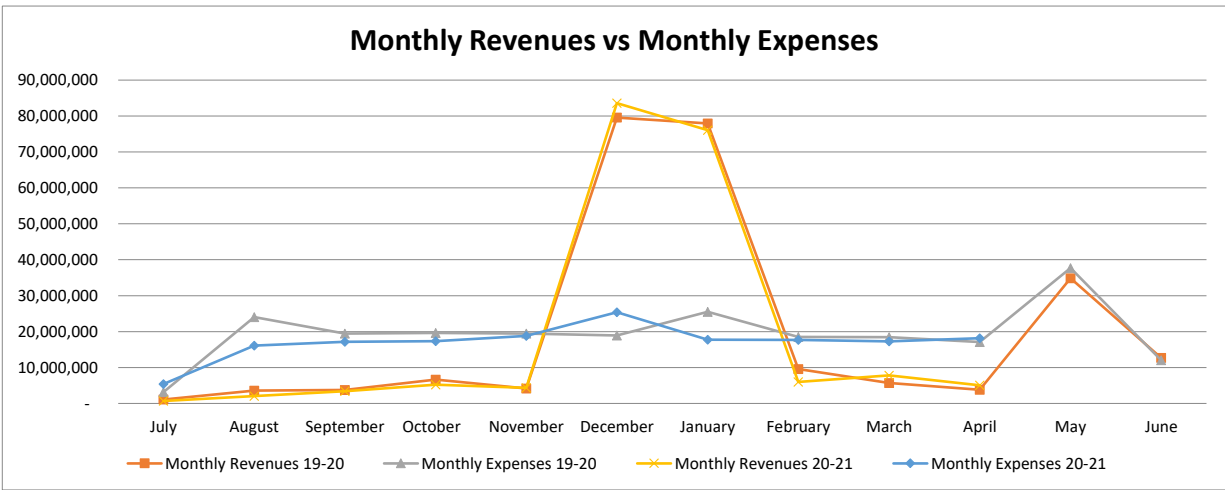
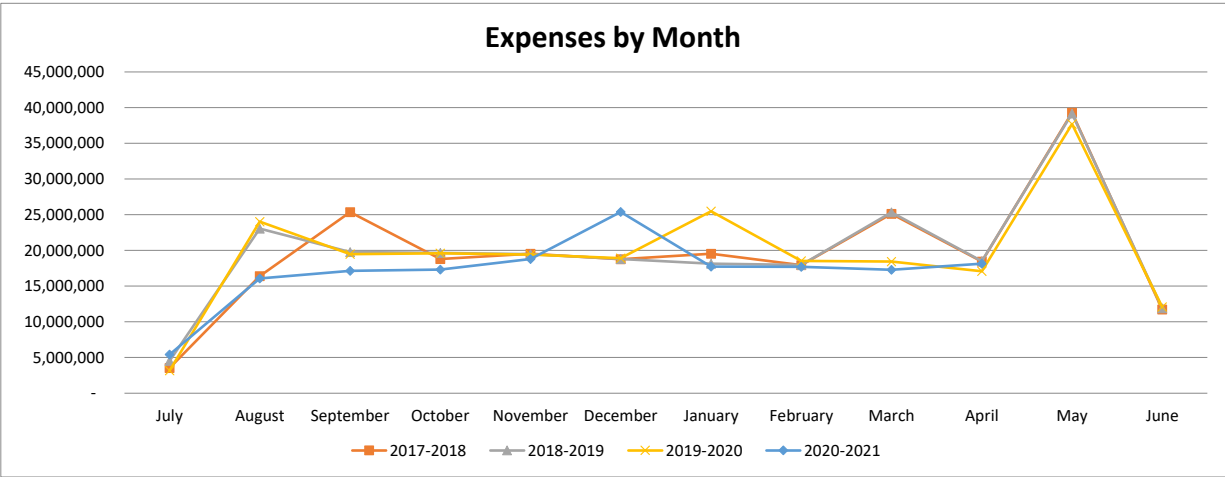
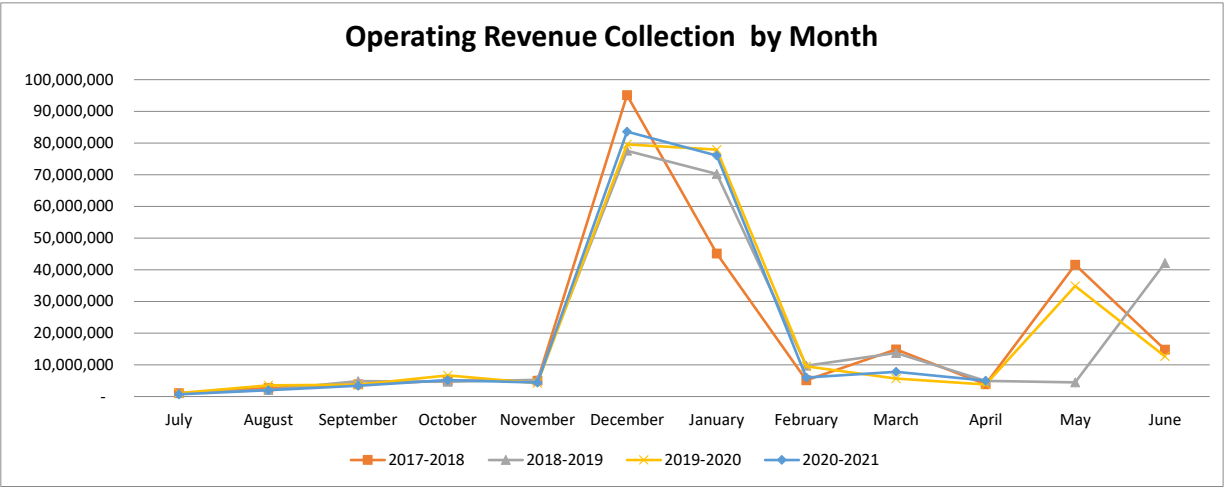


## PARKWAY SCHOOL DISTRICT ACTUAL OPERATING EXPENDITURES



## PARKWAY SCHOOL DISTRICT OPERATING FUND CASH AND INVESTMENTS





**Parkway School District  
Recapitulation of Funds  
Budget 2020-2021 With Restatement of Opening Balances**

**FY2021 Full Year Budget**

	<b>Operating</b>	<b>Debt Service</b>	<b>Capital Projects</b>	<b>2014 Bond Issue</b>	<b>2018 Bond Issue</b>	<b>All Funds</b>
Beginning Fund Balance	55,794,538	11,259,389	15,597,402	453,263	21,399,151	104,503,743
Revenues	243,775,334	25,514,085	577,239	-	60,713,329	330,579,987
Expenses	238,839,066	23,050,000	5,223,847	453,263	35,160,756	302,726,932
Transfers	(3,000,000)	-	3,000,000	-	-	-
Ending Fund Balance	57,730,806	13,723,474	13,950,794	-	46,951,724	132,356,798

**ACTUAL FY21 THROUGH 4/30/21**

	<b>Operating</b>	<b>Debt Service</b>	<b>Capital Projects</b>	<b>2014 Bond Issue</b>	<b>2018 Bond Issue</b>	<b>All Funds</b>
Beginning Fund Balance	55,794,538	11,259,389	15,597,402	337,825	21,514,589	104,503,743
Revenues	194,175,796	21,589,110	398,207	1,006	60,611,767	276,775,886
Expenses	170,989,473	22,776,299	3,365,633	338,831	20,338,441	217,808,677
Transfers	-	-	-	-	-	-
Ending Fund Balance	78,980,861	10,072,200	12,629,976	-	61,787,915	163,470,952

**ACTUAL FY20 THROUGH 4/30/20**

	<b>Operating</b>	<b>Debt Service</b>	<b>Capital Projects</b>	<b>2014 Bond Issue</b>	<b>2018 Bond Issue</b>	<b>All Funds</b>
Beginning Fund Balance	48,429,219	36,159,219	9,572,874	1,695,162	54,457,598	150,314,072
Revenues	195,744,627	22,265,096	6,407,775	22,351	741,159	225,181,008
Expenses	184,161,721	50,899,843	3,432,943	1,265,812	20,417,752	260,178,071
Transfers	-	-	-	-	-	-
Ending Fund Balance	60,012,125	7,524,472	12,547,706	451,701	34,781,005	115,317,009



**PARKWAY SCHOOL DISTRICT  
ACCRUAL BALANCE SHEET  
April 30, 2021**

	<b>TOTAL- ALL FUNDS 4/30/2021</b>	<b>TOTAL- ALL FUNDS 4/30/2020</b>
<b>ASSETS</b>		
Cash & Investments	\$ 181,606,153	132,641,103
Accounts Receivable	20	197,346
Inventories	1,167,431	748,845
Prepaid Expenses	1,689,921	1,671,986
Land	3,457,837	3,457,837
Land Improvements	17,321,487	15,628,730
Buildings/Improvements	198,567,464	200,708,807
Construction in Progress	39,597,056	21,129,217
Equipment	11,248,236	12,077,431
<b>Total Assets</b>	<b>\$ 454,655,605</b>	<b>388,261,302</b>
<b>LIABILITIES &amp; FUND BALANCE</b>		
Accounts Payable - Operating Funds	\$ 1,589,705	838,968
Accounts Payable - Bond Issue Funds	5,588	25,864
Accounts Payable - Medical Fund	72,248	-
Wages, Payroll Taxes, and Benefits Payable	3,461,239	3,281,795
Bonds Payable	203,435,000	245,760,000
Interest Payable	2,475,953	2,860,637
Liability for Compensated Absences	1,731,286	1,135,584
Liability for Early Retirement	63,016	205,016
<b>Total Liabilities</b>	<b>\$ 212,834,035</b>	<b>254,107,864</b>
Bond Issue Fund Balance	61,787,915	35,232,706
Debt Service Fund Balance	10,072,200	7,524,472
Capital Projects Fund Balance	12,629,976	12,547,706
Equity in Fixed Assets less Long Term Liabilities	62,486,825	3,040,785
Medical Fund Balance	15,863,793	15,795,644
Operating Fund Balance	78,980,861	60,012,125
<b>Total Fund Balance</b>	<b>\$ 241,821,570</b>	<b>134,153,438</b>
<b>TOTAL LIABILITIES &amp; FUND BALANCE</b>	<b>\$ 454,655,605</b>	<b>388,261,302</b>

# BREAKOUT OF CASH & INVESTMENT BALANCE

	<u>4/30/2021</u>	<u>4/30/2020</u>
MEDICAL FUND CASH	15,936,039	15,795,644
DEBT SERVICE FUND CASH	10,107,291	7,517,739
DEBT SERVICE FUND INVESTMENTS	-	306
BOND ISSUE FUND CASH	61,782,327	27,916,389
BOND ISSUE FUND INVESTMENTS	-	7,290,453
CAPITAL PROJECTS FUND CASH	8,189,977	10,022,706
OPERATING FUND CASH	85,582,300	2,142,475
OPERATING FUND INVESTMENTS	8,219	61,955,391
TOTAL	181,606,153	132,641,103

# RESTRICTED RESERVE

	<u>4/30/2021</u>	<u>4/30/2020</u>
FOOD SERVICE	(2,117,444)	(280,835)
MEDICAL BENEFITS	15,863,793	15,795,644
STUDENT ACTIVITY	3,182,533	3,207,354
TOTAL	16,928,882	18,722,163

### Grants from Covid-19 Stimulus Funds

Grant	Award	Received	Spent to Date	Status	Description
Cares Act - ESSER	875,664	875,644	875,664	approved- request is in for reimbursement should receive the funds by the end of February	Grant can be utilized for a variety of expenses. District is applying payroll costs to this grant. \$190,000 of grant is for non publics.
Coronavirus Relief Fund(CRF)	1,199,707	1,199,707	1,199,707	approved - fully received and fully spent	Allowable grant expenses include PPE, care coordinators and digital learning expenses. \$77,389 of this grant will be paid to VICC.
Covid-19 Response Supply Grant	502,883	502,883	502,883	approved - fully spent and received	This grant is a 75/25% split between the County and state. PPE, partitions and sanitation supplies were applied against this grant.
FEMA	174,932	-	233,243	approved - spent but not received	Reimbursed 75% of PPE supplies and some custodial over time from 3/17/20 to 9/15/20. Grant reimbursed at 75% of expenses, a total of \$233,243 in expenses were submitted with a projected reimbursement of \$174,932
Student Connectivity Grant - B	112,000	112,000	112,000	approved - fully spent and received	Grant is a 50% reimbursement for hot spots
Transportation Supplement	153,918	-	-	approved - unspent	Grant is primarily for PPE and sanitation supplies for buses. Have until 9/30/21 to spend the funds. Initial PPE purchases were applied to supply grant and CRF in order to maximize grant reimbursement
Seamless Summer Options	TBD	TBD	TBD	pending	Reimbursement for meal delivery
Cares Act - unemployment	TBD	127,198	254,396	approved	Reimburses District for 50% of unemployment expenses
Student Connectivity Grant - A	TBD	-	-	Determining need across District	Allows for up to \$4,000 per building to expand Wi-Fi at buildings or on buses
County Early Cares Child Care Reponse Program	100,950	-	100,950	approved and fully spent	Costs incurred to child care facilities in St. Louis County for business interruption expenses and compliance with health and safety measures
ESSER II	5,361,260	-	-	awaiting further guidance	Recently announced grant. Potential uses include PPE, digital learning expenses and care coordinators over the next two fiscal years.

PARKWAY SCHOOL DISTRICT  
MODIFIED ACCRUAL REVENUE SCHEDULE  
TOTAL ALL FUNDS

	YEAR TO DATE 4/30/2021				YEAR TO DATE 4/30/2020				CHANGE FROM PRIOR YEAR	
	BUDGETED REVENUE	REVENUE REALIZED	% REALIZED	BALANCE TO BE REALIZED	REVENUE** 6/30/2020	REVENUE REALIZED	% REALIZED	BALANCE TO BE REALIZED	\$	%
<b>LOCAL</b>										
Property Taxes	184,179,730	155,194,425	84.26%	28,985,305	180,190,372	151,376,686	84.01%	28,813,686	3,817,739	2.12%
Delinquent Property Taxes	-	-	0.00%	-	1,892,029	-	0.00%	1,892,029	-	0.00%
Sales Tax	16,221,650	10,900,573	67.20%	5,321,077	16,068,745	10,568,530	65.77%	5,500,215	332,043	2.07%
M&M Surtax	5,969,544	3,604,738	60.39%	2,364,806	5,696,356	3,684,421	64.68%	2,011,935	(79,683)	-1.40%
Food Service	100,000	151,946	151.95%	(51,946)	3,223,037	3,330,872	103.35%	(107,835)	(3,178,926)	-98.63%
Other Local	3,237,446	2,265,604	69.98%	971,842	3,168,878	3,645,467	115.04%	(476,589)	(1,379,863)	-43.54%
VICC-VST Revenue	6,912,684	2,179,418	31.53%	4,733,266	7,440,889	1,497,994	20.13%	5,942,895	681,424	9.16%
<b>TOTAL LOCAL</b>	<b>216,621,054</b>	<b>174,296,704</b>	<b>80.46%</b>	<b>42,324,350</b>	<b>217,680,306</b>	<b>174,103,970</b>	<b>79.98%</b>	<b>43,576,336</b>	<b>192,734</b>	<b>0.09%</b>
<b>INTEREST</b>	<b>100,000</b>	<b>233,573</b>	<b>233.57%</b>	<b>(133,573)</b>	<b>1,162,586</b>	<b>642,262</b>	<b>55.24%</b>	<b>520,324</b>	<b>(408,689)</b>	<b>-35.15%</b>
<b>COUNTY</b>	<b>3,611,234</b>	<b>3,724,165</b>	<b>103.13%</b>	<b>(112,931)</b>	<b>4,040,235</b>	<b>4,040,235</b>	<b>100.00%</b>	<b>-</b>	<b>(316,070)</b>	<b>-7.82%</b>
<b>STATE</b>										
Basic Formula	3,099,096	2,091,447	67.49%	1,007,649	3,504,068	2,473,664	70.59%	1,030,404	(382,217)	-10.91%
Classroom Trust	5,702,148	5,198,086	91.16%	504,062	5,079,240	4,965,474	97.76%	113,766	232,612	4.58%
Transportation	1,226,076	1,167,522	95.22%	58,554	1,223,625	1,180,777	96.50%	42,848	(13,255)	-1.08%
Other State	1,381,629	749,008	54.21%	632,621	1,623,985	741,809	45.68%	882,176	7,199	0.44%
<b>TOTAL STATE</b>	<b>11,408,949</b>	<b>9,206,063</b>	<b>80.69%</b>	<b>2,202,886</b>	<b>11,430,918</b>	<b>9,361,724</b>	<b>81.90%</b>	<b>2,069,194</b>	<b>(155,661)</b>	<b>-1.36%</b>
<b>FEDERAL</b>										
Federal Food Service	2,372,289	1,511,792	63.73%	860,497	1,572,289	1,572,289	100.00%	-	(60,497)	-3.85%
Other Federal Entitlements	5,779,152	3,734,528	64.62%	2,044,624	2,596,807	1,753,581	67.53%	843,226	1,980,947	76.28%
<b>TOTAL FEDERAL</b>	<b>8,151,441</b>	<b>5,246,320</b>	<b>64.36%</b>	<b>2,905,121</b>	<b>4,169,096</b>	<b>3,325,870</b>	<b>79.77%</b>	<b>843,226</b>	<b>1,920,450</b>	<b>46.06%</b>
<b>OTHER FINANCING SOURCES</b>										
Transportation Reimbursement	2,357,297	470,576	19.96%	1,886,721	2,105,429	1,625,706	77.21%	479,723	(1,155,130)	-54.86%
Tuition From Other Districts	20,000	22,258	111.29%	(2,258)	54,633	31,544	57.74%	23,089	(9,286)	-17.00%
Sale Of Property	5,359	13,060	243.70%	(7,701)	5,359	5,359	100.00%	-	7,701	143.70%
<b>TOTAL OTHER FINANCING SOURCES</b>	<b>2,382,656</b>	<b>505,894</b>	<b>21.23%</b>	<b>1,876,762</b>	<b>2,165,421</b>	<b>1,662,609</b>	<b>76.78%</b>	<b>502,812</b>	<b>(1,156,715)</b>	<b>-53.42%</b>
<b>SUB-TOTAL OPERATING REVENUE</b>	<b>242,275,334</b>	<b>193,212,719</b>	<b>79.75%</b>	<b>49,062,615</b>	<b>240,648,562</b>	<b>193,136,670</b>	<b>80.26%</b>	<b>47,511,892</b>	<b>76,049</b>	<b>0.03%</b>
<b>STUDENT ACTIVITIES</b>	<b>1,500,000</b>	<b>963,077</b>	<b>64.21%</b>	<b>536,923</b>	<b>2,642,986</b>	<b>2,607,957</b>	<b>98.67%</b>	<b>35,029</b>	<b>(1,644,880)</b>	<b>-62.24%</b>
<b>TOTAL OPERATING REVENUE</b>	<b>243,775,334</b>	<b>194,175,796</b>	<b>79.65%</b>	<b>49,599,538</b>	<b>243,291,548</b>	<b>195,744,627</b>	<b>80.46%</b>	<b>47,546,921</b>	<b>(1,568,831)</b>	<b>-0.64%</b>
<b>NON-OPERATING REVENUES</b>										
2019 Bond Issue	55,000,000	55,000,000	100.00%	-	-	-	0.00%	-	55,000,000	100.00%
2019 Bond Issue Interest/Premium	5,713,329	5,611,767	98.22%	101,562	773,522	741,159	95.82%	32,363	4,870,608	629.67%
2014 Bond Issue Interest/Premium	-	1,006	100.00%	(1,006)	23,913	22,351	93.47%	1,562	(21,345)	-89.26%
Debt Service Property Taxes	24,709,251	20,821,446	84.27%	3,887,805	25,013,679	21,005,656	83.98%	4,008,023	(184,210)	-0.74%
Debt Service Delinquent Prop. Taxes	-	-	0.00%	-	262,648	-	0.00%	262,648	-	0.00%
Debt Service Interest/Premium	100,000	38,039	38.04%	61,961	706,363	522,213	73.93%	184,150	(484,174)	-68.54%
Debt Service County Revenue	704,834	729,625	103.52%	(24,791)	740,637	737,227	99.54%	3,410	(7,602)	-1.03%
Cap. Projects Property Taxes	-	-	0.00%	-	6,769,007	5,689,006	0.00%	1,080,001	(5,689,006)	-84.04%
Cap. Projects Delinquent Prop. Taxes	-	-	0.00%	-	71,076	-	100.00%	71,076	-	0.00%
Capital Projects Other	576,839	398,207	69.03%	178,632	874,155	717,846	82.12%	156,309	(319,639)	-36.57%
Capital Interest/Premium	400	-	0.00%	400	676	923	136.54%	(247)	(923)	-136.54%
<b>TOTAL ALL REVENUE SOURCES</b>	<b>330,579,987</b>	<b>276,775,886</b>	<b>83.72%</b>	<b>53,804,101</b>	<b>278,527,224</b>	<b>225,181,008</b>	<b>80.85%</b>	<b>53,346,216</b>	<b>51,594,878</b>	<b>18.52%</b>

EXPENDITURE SUMMARY BY OBJECT  
TOTAL ALL FUNDS  
APRIL 30, 2021

	BUDGET 2020-2021	ACTUAL EXPENDITURES YTD 4/30/2021	% EXPENDED 2020-2021	ACTUAL** EXPENDITURES 06/30/2020	ACTUAL EXPENDITURES YTD 4/30/2020	% EXPENDED 2019-2020	CHANGE FROM PRIOR YEAR	
							\$	%
<b>SALARIES</b>								
Certificated	104,379,280	74,589,634	71.46%	100,989,981	77,108,803	76.35%	(2,519,169)	-4.89%
Classified	36,735,260	26,574,229	72.34%	37,370,335	30,144,207	80.66%	(3,569,978)	-8.32%
Administrative	13,309,405	10,663,089	80.12%	12,840,418	10,770,372	83.88%	(107,283)	-3.76%
<b>TOTAL SALARIES</b>	<b>154,423,945</b>	<b>111,826,952</b>	<b>72.42%</b>	<b>151,200,734</b>	<b>118,023,382</b>	<b>78.06%</b>	<b>(6,196,430)</b>	<b>-5.64%</b>
<b>BENEFITS</b>								
Retirement, Social Security and Medicare	26,102,575	19,016,583	72.85%	25,520,522	19,948,749	78.17%	(932,166)	-5.31%
Medical, Dental and Life Insurance	27,789,330	20,572,892	74.03%	26,744,572	20,718,432	77.47%	(145,540)	-3.44%
<b>TOTAL BENEFITS</b>	<b>53,891,905</b>	<b>39,589,475</b>	<b>73.46%</b>	<b>52,265,094</b>	<b>40,667,181</b>	<b>77.81%</b>	<b>(1,077,706)</b>	<b>-4.35%</b>
<b>PURCHASED SERVICES</b>								
Substitute Services	2,511,373	1,252,067	49.86%	2,167,474	2,099,047	96.84%	(846,980)	-46.99%
Tuition	170,000	305,410	179.65%	136,709	47,764	34.94%	257,646	144.71%
Professional Services	2,564,601	1,278,107	49.84%	1,716,240	1,520,967	88.62%	(242,860)	-38.79%
Audit	36,200	33,500	92.54%	36,300	31,500	86.78%	2,000	5.76%
Technical Services	123,067	75,260	61.15%	82,545	57,807	70.03%	17,453	-8.88%
Legal Services	218,549	134,252	61.43%	201,934	176,272	87.29%	(42,020)	-25.86%
Property Services	2,865,007	1,801,530	62.88%	2,605,121	2,194,659	84.24%	(393,129)	-21.36%
Travel & Contracted Trans.	917,339	317,521	34.61%	1,383,405	1,345,891	97.29%	(1,028,370)	-62.68%
Property Insurance	875,336	889,066	101.57%	859,274	858,670	99.93%	30,396	1.64%
Liability Insurance	905,380	927,303	102.42%	891,034	891,639	100.07%	35,664	2.35%
Other Purchased Services	3,252,634	1,396,928	42.95%	1,899,586	1,104,369	58.14%	292,559	-15.19%
<b>TOTAL PURCHASED SERVICES</b>	<b>14,439,486</b>	<b>8,410,944</b>	<b>58.25%</b>	<b>11,979,622</b>	<b>10,328,585</b>	<b>86.22%</b>	<b>(1,917,641)</b>	<b>-27.97%</b>
<b>CONSUMABLES</b>								
General Supplies	5,291,679	3,543,800	66.97%	4,897,717	2,914,697	59.51%	629,103	7.46%
Instructional Supplies	7,782,676	3,375,819	43.38%	5,093,563	5,169,300	101.49%	(1,793,481)	-58.11%
Textbooks and Library Books	1,678,109	863,668	51.47%	883,589	288,942	32.70%	574,726	18.77%
Gasoline/Diesel	681,521	187,314	27.48%	426,866	398,073	93.25%	(210,760)	-65.77%
Energy Services	3,540,000	1,934,503	54.65%	2,944,293	2,339,142	79.45%	(404,639)	-24.80%
Food Service Supplies	1,284,745	680,286	52.95%	1,780,307	1,933,124	108.58%	(1,252,838)	-55.63%
<b>TOTAL CONSUMABLES</b>	<b>20,258,730</b>	<b>10,585,390</b>	<b>52.25%</b>	<b>16,026,335</b>	<b>13,043,278</b>	<b>81.39%</b>	<b>(2,457,889)</b>	<b>-29.14%</b>
<b>OPERATING LEASES</b>	<b>-</b>	<b>-</b>	<b>0.00%</b>	<b>2,465</b>	<b>2,465</b>	<b>100.00%</b>	<b>(2,465)</b>	<b>-100.00%</b>
<b>SUBTOTAL OPERATING EXPENSES</b>	<b>243,014,066</b>	<b>170,412,760</b>	<b>70.12%</b>	<b>231,474,250</b>	<b>182,064,891</b>	<b>78.65%</b>	<b>(11,652,131)</b>	<b>-8.53%</b>
<b>STUDENT ACTIVITIES</b>	<b>1,500,000</b>	<b>576,713</b>	<b>38.45%</b>	<b>2,451,979</b>	<b>2,096,830</b>	<b>85.52%</b>	<b>(1,520,117)</b>	<b>-47.07%</b>
<b>ANTICIPATED EXPENDITURE SAVINGS</b>	<b>(5,675,000)</b>	<b>-</b>	<b>0.00%</b>	<b>-</b>	<b>-</b>	<b>0.00%</b>	<b>-</b>	<b>0.00%</b>
<b>TOTAL OPERATING EXPENSES</b>	<b>238,839,066</b>	<b>170,989,473</b>	<b>71.59%</b>	<b>233,926,229</b>	<b>184,161,721</b>	<b>78.73%</b>	<b>(13,172,248)</b>	<b>-7.13%</b>
<b>CAPITAL OUTLAY - NON BOND EXPENSES</b>								
Land Improvement	62,000	15,816	25.51%	44,255	22,255	50.29%	(6,439)	-24.78%
Building Alterations	1,490,513	682,079	45.76%	493,184	313,882	63.64%	368,197	-17.88%
General Equipment	1,009,463	554,833	54.96%	715,033	680,738	95.20%	(125,905)	-40.24%
Instructional Equipment	149,399	66,661	44.62%	133,851	67,527	50.45%	(866)	-5.83%
Technology Equipment	330,000	51,207	15.52%	665,357	857,270	128.84%	(806,063)	-113.33%
Student Activity	24,000	34,259	142.75%	161,707	134,201	82.99%	59,765	59.76%
Vehicles	422,190	338,428	80.16%	84,272	84,272	100.00%	254,156	-19.84%
School Buses	1,407,301	1,407,301	100.00%	1,183,173	1,063,244	100.00%	344,057	0.00%
<b>TOTAL CAPITAL OUTLAY</b>	<b>4,894,866</b>	<b>3,150,584</b>	<b>64.37%</b>	<b>3,480,832</b>	<b>3,223,389</b>	<b>92.60%</b>	<b>(72,805)</b>	<b>-28.24%</b>
<b>2014 BOND ISSUE EXPENDITURES</b>	<b>453,263</b>	<b>338,831</b>	<b>0.00%</b>	<b>1,265,812</b>	<b>1,265,812</b>	<b>100.00%</b>	<b>(926,981)</b>	<b>-100.00%</b>
<b>2018 BOND ISSUE EXPENDITURES</b>	<b>35,160,756</b>	<b>20,338,441</b>	<b>57.84%</b>	<b>33,831,969</b>	<b>20,417,752</b>	<b>0.00%</b>	<b>(79,311)</b>	<b>57.84%</b>
<b>CAPITAL FUND - BUS LEASES</b>	<b>328,981</b>	<b>215,049</b>	<b>65.37%</b>	<b>209,554</b>	<b>209,554</b>	<b>100.00%</b>	<b>5,495</b>	<b>-34.63%</b>
<b>DEBT SERVICE - GO BONDS</b>	<b>23,050,000</b>	<b>22,776,299</b>	<b>98.81%</b>	<b>51,623,157</b>	<b>50,899,843</b>	<b>98.60%</b>	<b>(28,123,544)</b>	<b>0.21%</b>
<b>GRAND TOTAL EXPENSES</b>	<b>302,726,932</b>	<b>217,808,677</b>	<b>71.95%</b>	<b>324,337,553</b>	<b>260,178,071</b>	<b>80.22%</b>	<b>(42,369,394)</b>	<b>-8.27%</b>

**FOOD SERVICE  
STATEMENT OF INCOME AND EXPENSE  
April 30, 2021**

		<b>BUDGET FY21</b>	<b>CURRENT MONTH</b>	<b>ACTUAL EXPENDITURES YTD 4/30/2021</b>	<b>% EXPENDED</b>	<b>PRIOR YEAR ACTUAL FY20</b>	<b>PRIOR YEAR TO DATE April 2020</b>	<b>PRIOR YEAR % EXPENDED</b>
<b>RESERVE FOOD SERVICE SURPLUS</b>	<b>-2449.1%</b>		(\$2,168,439)	(\$804,186)		\$34,233	\$34,233	
<b>INCOME</b>								
<b>LOCAL</b>	<b>-95.4%</b>	100,000	\$41,583	\$151,946	151.95%	\$3,223,037	\$3,330,872	103.35%
<b>STATE</b>	<b>-40.5%</b>	41,887	\$2,222	\$9,497	22.67%	\$16,277	\$15,957	98.03%
<b>FEDERAL</b>	<b>36.6%</b>	<u>3,372,289</u>	<u>\$451,284</u>	<u>\$1,963,077</u>	<u>58.21%</u>	<u>\$1,518,152</u>	<u>\$1,437,037</u>	<u>94.66%</u>
<b>TOTAL INCOME</b>	<b>-55.6%</b>	3,514,176	\$495,089	\$2,124,519	60.46%	\$4,757,466	\$4,783,866	100.55%
<b>COST OF GOODS SOLD:</b>								
<b>Beginning Inventory</b>	<b>86.0%</b>		\$290,224	\$281,567		\$151,400	\$151,400	100.00%
<b>Add: Purchases-Food</b>	<b>-64.8%</b>	1,584,745	\$151,424	\$680,286	42.93%	\$1,780,307	\$1,933,124	108.58%
<b>Purchases-Other</b>	<b>-43.6%</b>	191,375	\$14,629	\$107,661	56.26%	\$198,486	\$190,750	96.10%
<b>Goods Available</b>	<b>-53.0%</b>		\$456,277	\$1,069,514		\$2,130,193	\$2,275,274	106.81%
<b>Less: Ending Inventory</b>	<b>-13.2%</b>		<u>\$266,283</u>	<u>\$266,283</u>		<u>\$281,567</u>	<u>\$306,943</u>	<u>109.01%</u>
<b>TOTAL COST OF GOODS</b>	<b>-59.2%</b>	1,776,120	\$189,994	\$803,231	45.22%	\$1,848,626	\$1,968,331	106.48%
<b>GROSS MARGIN</b>	<b>-53.1%</b>	\$1,738,056	\$305,095	\$1,321,288	76.02%	\$2,908,840	\$2,815,535	96.79%
<b>OPERATION COSTS:</b>								
<b>Salaries</b>	<b>-19.0%</b>	2,525,005	\$151,306	\$1,570,818	62.21%	\$2,358,167	\$1,940,188	82.28%
<b>Fringe Benefits</b>	<b>-13.3%</b>	1,312,764	\$93,999	\$863,180	65.75%	\$1,191,270	\$995,561	83.57%
<b>Purchased Services</b>	<b>-18.8%</b>	173,940	\$9,908	\$65,630	37.73%	\$84,285	\$80,819	95.89%
<b>Operating Supplies</b>	<b>14.5%</b>	148,094	\$1,495	\$46,018	31.07%	\$41,438	\$40,183	96.97%
<b>Credit for Services</b>	<b>-70.6%</b>	-	<u>(\$6,769)</u>	<u>(\$29,761)</u>	<u>#DIV/0!</u>	<u>(\$103,033)</u>	<u>(\$101,279)</u>	<u>98.30%</u>
<b>Total Operating Costs</b>	<b>-14.9%</b>	4,159,803	\$249,940	\$2,515,885	60.48%	\$3,572,127	\$2,955,472	82.74%
<b>INCOME (LOSS) FROM OPERATIONS</b>	<b>753.7%</b>	<u>(2,421,747)</u>	<u>\$55,155</u>	<u>(\$1,194,597)</u>		<u>(\$663,287)</u>	<u>(\$139,937)</u>	<u>21.10%</u>
<b>EQUIPMENT</b>		478,918	<u>\$4,160</u>	<u>\$118,662</u>	24.78%	<u>\$175,132</u>	<u>\$175,132</u>	100.00%
<b>RESERVE FOOD SERVICE SURPLUS</b>	<b>654.0%</b>		(\$2,117,444)	(\$2,117,444)		(\$804,186)	(\$280,835)	34.92%

**Parkway School District  
Building Location Recap Report**

Fiscal Year 2021 Through Period 10    Run Date: 05-20-2021 @ 09:20:54

	Budget	Expended	Encumbrances	Unexpended
FERN RIDGE HIGH	20,840.00	7,055.33	1,714.73	12,069.94
CENTRAL HIGH	351,206.00	235,102.68	20,786.80	95,316.52
NORTH HIGH	294,501.00	110,864.78	41,513.91	142,122.31
WEST HIGH	316,192.00	107,839.86	50,061.33	158,290.81
SOUTH HIGH	471,346.00	211,047.81	50,435.20	209,862.99
SOUTHWEST MIDDLE	117,619.00	62,613.38	9,479.23	45,526.39
CENTRAL MIDDLE	187,502.00	55,037.64	37,895.73	94,568.63
NORTHEAST MIDDLE	168,513.00	105,004.81	23,276.17	40,232.02
SOUTH MIDDLE	126,250.00	64,938.86	17,707.96	43,603.18
WEST MIDDLE	212,061.00	82,386.24	16,451.96	113,222.80
MCKELVEY PRIMARY	18,000.00	507.11	0.00	17,492.89
BARRETS ELEM.	71,270.00	33,898.77	8,760.94	28,610.29
BELLERIVE ELEM.	76,992.00	46,428.55	5,354.67	25,208.78
CARMAN TRAILS ELEM.	81,341.00	33,584.84	2,856.30	44,899.86
CLAYMONT ELEM.	74,867.00	35,200.11	4,170.16	35,496.73
CRAIG ELEM.	63,678.00	37,082.02	2,808.38	23,787.60
GREEN TRAILS ELEM.	76,678.00	38,611.15	988.14	37,078.71
HANNA WOODS ELEM.	63,264.00	20,663.41	2,700.81	39,899.78
HENRY ELEM.	127,199.00	49,811.38	27,625.96	49,761.66
HIGHCROFT ELEM.	53,676.00	19,917.49	82.86	33,675.65
MASON RIDGE ELEM.	88,857.00	32,505.37	1,779.55	54,572.08
MCKELVEY INTERMEDIATE	128,633.00	52,939.15	3,899.32	71,794.53
OAK BROOK ELEM.	78,566.00	33,306.90	2,601.74	42,657.36
PIERREMONT ELEM.	93,477.00	32,384.68	790.92	60,301.40
RIVER BEND ELEM.	66,309.00	36,542.32	6,272.08	23,494.60
ROSS ELEM.	64,766.00	31,371.36	721.69	32,672.95
SORRENTO SPRINGS ELEM.	49,487.00	13,206.88	0.00	36,280.12
SHENANDOAH VALLEY ELEM.	74,322.00	40,106.01	5,457.30	28,758.69
WREN HOLLOW ELEM.	62,818.00	43,707.17	2,843.53	16,267.30
 Grand Total for Funds 10-12	 3,357,240.00	 1,499,465.60	 253,373.20	 1,604,401.20
Grand Total for Fund 20	0.00	10,428.41	0.00	-10,428.41
Grand Total for Fund 30	0.00	0.00	0.00	0.00
Grand Total for Funds 40-41	322,990.00	163,772.05	95,664.17	63,553.78
Grand Total All	3,680,230.00	1,673,666.06	349,037.37	1,657,526.57

**Parkway School District  
Consolidated Budget - Programs Recap Report**

Fiscal Year 2021 Through Period 10    Run Date: 05-20-2021 @ 09:14:36

	Budget	Expended	Encumbrances	Unexpended
SPECIAL READING	26,697.00	8,534.57	1,890.85	16,271.58
COMM ARTS	152,810.00	59,233.47	6,505.20	87,071.33
MATHEMATICS	70,261.00	29,921.75	9,071.76	31,267.49
FINE ARTS	133,974.00	85,839.76	12,267.41	35,866.83
PHYSICAL EDUCATION	72,521.00	24,373.15	9,609.92	38,537.93
SCIENCE	99,481.00	37,299.24	367.44	61,814.32
SOCIAL STUDIES	78,847.00	16,438.55	7,145.41	55,263.04
INSTRUCTIONAL TECHNOLOGY	87,909.00	43,021.51	0.00	44,887.49
GUIDANCE	26,180.00	8,793.44	2,548.18	14,838.38
ART	125,798.00	80,993.46	8,358.65	36,445.89
BLDG ADMIN SERVICES	2,310,610.00	1,046,955.42	188,876.49	1,074,778.09
AUDIO VISUAL SERVICES	5,100.00	30.40	0.00	5,069.60
BUSINESS EDUCATION	35,454.00	11,390.17	2,559.37	21,504.46
MODERN CLASSICAL LANG	39,963.00	14,151.78	0.00	25,811.22
FAMILY AND CONSUMER SC	84,167.00	33,675.44	832.05	49,659.51
INDUSTRIAL ARTS	46,751.00	21,626.72	706.95	24,417.33
STUDENT BODY ACT	141,359.00	60,547.13	64,336.33	16,475.54
COOP VOC ED	2,590.00	213.76	1,896.88	479.36
UNIFIED STUDIES	3,322.00	1,952.17	544.36	825.47
SPEECH	21,742.00	13,924.21	-11.90	7,829.69
LIBRARY SVCS	90,941.00	67,860.82	31,069.59	-7,989.41
HEALTH ED	9,015.00	2,961.80	462.43	5,590.77
EEE CAMP	1,625.00	494.69	0.00	1,130.31
ESOL	1,312.00	643.25	0.00	668.75
GIFTED EDUCATION	12,001.00	2,789.40	0.00	9,211.60
INSTRUCTIONAL STAFFING	132,478,607.00	99,209,662.97	0.00	33,268,944.03
BLDG LEVEL STAFFING	16,256,288.00	13,383,342.27	0.00	2,872,945.73
ATHLETICS	6,570,887.00	1,338,193.23	178,423.94	5,054,269.83
ADULT BASIC EDUCATION	1,698,775.00	1,093,963.58	6,807.85	598,003.57
SWIM CLUB	776,429.00	434,668.57	28,718.00	313,042.43
EARLY CHILDHOOD	1,572,661.00	1,305,321.82	33.14	267,306.04
PRESCHOOLS	2,069,378.00	1,597,334.03	1,081.86	470,962.11
PARK ROCK COMM ED	1,214,270.00	14,524.56	0.00	1,199,745.44
STUDENT SERVICES	208,709.00	65,619.57	0.00	143,089.43
PUPIL PERSONNEL	2,057,508.00	1,473,897.45	582.49	583,028.06
HEALTH SERVICES	2,925,427.00	2,084,582.51	20,505.30	820,339.19
GUIDANCE AND COUNSELING	225,272.00	176,639.54	5,849.98	42,782.48
SEB SUPPORT	103,205.00	50,041.34	3,334.00	49,829.66



**Parkway School District  
Consolidated Budget - Programs Recap Report**

Fiscal Year 2021 Through Period 10    Run Date: 05-20-2021 @ 09:14:36

	Budget	Expended	Encumbrances	Unexpended
DATA MGMT/RESEARCH	361,843.00	296,286.81	0.00	65,556.19
STUDENT DISC & ALT STUDIES	788,933.00	614,479.65	19.30	174,434.05
SPECIAL SERVICES	393,111.00	275,337.07	7,000.00	110,773.93
ASST SUPER OF STUDENT SERV	393,625.00	215,496.95	4,099.53	174,028.52
TEACH LEARN ACCOUNTABILITY	5,548,976.00	3,748,844.86	691,653.52	1,108,477.62
PROFESSIONAL LEARNING	1,415,695.00	668,136.00	4,197.50	743,361.50
READING DIAGNOSTICS	167,312.00	136,887.34	0.00	30,424.66
INSTRUC TECH LIBRARY MEDIA	1,148,908.00	922,669.32	64,530.36	161,708.32
STUDENT ASSESSMENT	380,022.00	164,737.39	101,464.00	113,820.61
PROGRESS MONITORING	294,069.00	216,939.12	0.00	77,129.88
ELEM COMM ARTS	5,430.00	2,071.60	162.06	3,196.34
ELEM SOC STUDIES	17,813.00	17,563.00	0.00	250.00
ELEM MATH	7,000.00	8,995.82	0.00	-1,995.82
ELEM SCIENCE	6,587.00	355.48	0.00	6,231.52
MIDD ELA	1,975.00	0.00	0.00	1,975.00
MIDD SOC STUDIES	500.00	89.00	0.00	411.00
MIDD MATH	10,000.00	253.93	0.00	9,746.07
MIDD SCIENCE	8,625.00	93.00	0.00	8,532.00
HIGH ELA	6,329.00	856.75	0.00	5,472.25
HIGH SOC STUDIES	1,070.00	247.79	0.00	822.21
HIGH MATH	1,700.00	0.00	0.00	1,700.00
HIGH SCIENCE	955.00	947.20	0.00	7.80
FINE ARTS	118,903.00	59,909.92	34,048.30	24,944.78
PHYSICAL EDUC	2,665.00	1,527.65	0.00	1,137.35
GIFTED	23,700.00	17,561.02	0.00	6,138.98
ESOL	45,262.00	18,042.16	1,029.10	26,190.74
WORLD LANGUAGE	11,148.00	11,142.02	0.00	5.98
CAREER & TECH ED	3,625.00	2,238.05	0.00	1,386.95
CHOICE	400,225.00	250,351.03	77,869.01	72,004.96
INSTRUCTIONAL TECHNOLOGY	5,500.00	1,159.96	0.00	4,340.04
PATH	154,447.00	95,742.39	0.00	58,704.61
OUTDOOR SCHOOL	30,850.00	6,356.89	0.00	24,493.11
SUMMER SCHOOL	1,603,615.00	43,599.52	20,086.00	1,539,929.48
BOARD OF EDUCATION	157,941.00	48,465.90	0.00	109,475.10
SUPERINTENDENT	482,181.00	381,244.43	0.00	100,936.57
DISTRICT DUES	159,040.00	155,803.51	0.00	3,236.49
LEGAL SERVICES	218,549.00	134,252.25	58,429.00	25,867.75
DEPUTY SUPERINTENDENT	442,698.00	311,606.78	0.00	131,091.22

**Parkway School District  
Consolidated Budget - Programs Recap Report**

Fiscal Year 2021 Through Period 10    Run Date: 05-20-2021 @ 09:14:36

	Budget	Expended	Encumbrances	Unexpended
CHIEF FINANCIAL OFFICER	354,730.00	283,003.16	433.15	71,293.69
COMMUNICATIONS	1,063,217.00	759,306.42	6,204.91	297,705.67
SAFETY SECURITY	1,228,078.00	900,980.82	262,831.58	64,265.60
SPECIAL PROJECTS	3,416,895.00	1,067,797.82	122,278.09	2,226,819.09
FINANCE	1,037,659.00	904,219.91	7,961.76	125,477.33
INTERNAL EQUIP FIN	478,448.00	354,208.05	157,596.39	-33,356.44
RISK MGMT	2,973,195.00	2,659,739.66	239,093.28	74,362.06
FOOD SERVICES	6,414,840.46	3,422,494.07	398,295.07	2,594,051.32
PURCHASING	494,446.00	393,165.87	0.00	101,280.13
PRINT SHOP	26,111.00	37,276.89	21,180.51	-32,346.40
SCHOOL STORES	202,930.00	110,926.10	29,395.85	62,608.05
WAREHOUSE	777,606.00	619,138.44	10,139.76	148,327.80
MAILROOM	82,681.00	61,323.26	1,591.63	19,766.11
TECHNOLOGY	6,561,968.00	4,893,596.56	65,493.28	1,602,878.16
HUMAN RESOURCES	1,180,241.00	859,960.69	9,229.47	311,050.84
TRANSPORTATION	7,613,941.00	5,302,011.63	117,890.33	2,194,039.04
SSD TRANSPORTATION	2,440,557.00	1,035,117.92	0.00	1,405,439.08
STUDENTS IN TRANSITION	1,050,000.00	200,138.07	211,333.47	638,528.46
FACILITY OPERATIONS	8,595,421.00	5,780,488.45	132,548.06	2,682,384.49
FACILITY MAINTENANCE	4,811,792.00	3,588,337.62	447,100.84	776,353.54
GROUNDS MAINTENANCE	2,111,576.00	1,251,941.56	285,502.68	574,131.76
PLANNING	2,225,985.00	1,461,113.46	529,180.14	235,691.40
ENVIRONMENTAL SVCS	538,566.00	305,341.77	135,562.05	97,662.18
FACILITY MANAGEMENT	955,723.00	678,950.68	142,974.24	133,798.08
REBATE PROJECTS	385,125.00	-5,455.00	218,987.00	171,593.00
ENERGY SERVICES	4,090,000.00	2,243,271.16	1,379,880.00	466,848.84
SUSTAINABILITY	929,389.00	332,259.50	326,998.75	270,130.75
2014 BOND	453,263.00	338,552.57	48,364.50	66,345.93
2018 BOND	36,852,569.28	20,338,441.40	13,498,915.03	3,015,212.85
DEBT SERVICE	22,137,000.00	22,776,299.12	4,281.00	-643,580.12
STATE GRANTS	299,369.00	231,907.24	0.00	67,461.76
FEDERAL GRANTS	1,589,545.00	1,182,578.18	43,985.86	362,980.96
LOCAL GRANTS	134,770.00	101,258.38	10,650.00	22,861.62
Grand Total for Funds 10-12	87,712,871.46	55,907,062.43	5,957,540.95	25,848,268.08
Grand Total for Fund 20	114,692,972.00	114,509,432.59	0.00	43,183,539.41

**Parkway School District  
Consolidated Budget - Programs Recap Report**

Fiscal Year 2021 Through Period 10    Run Date: 05-20-2021 @ 09:14:36

	<b>Budget</b>	<b>Expended</b>	<b>Encumbrances</b>	<b>Unexpended</b>
<b>Grand Total for Fund 30</b>	<b>22,137,000.00</b>	<b>22,776,299.12</b>	<b>4,281.00</b>	<b>-643,580.12</b>
<b>Grand Total for Funds 40-41</b>	<b>5,770,897.00</b>	<b>3,670,204.95</b>	<b>1,064,103.31</b>	<b>4,051,801.59</b>
 <b>Grand Total All</b>	 <b>310,166,309.74</b>	 <b>217,201,440.49</b>	 <b>20,524,840.29</b>	 <b>72,440,028.96</b>

**Parkway School District  
Program Budget - Programs Recap Report**

Fiscal Year 2021 Through Period 10    Run Date: 05-20-2021 @ 09:15:59

	Budget	Expended	Encumbrances	Unexpended
SPECIAL READING	26,697.00	8,534.57	1,890.85	16,271.58
COMM ARTS	152,810.00	59,233.47	6,505.20	87,071.33
MATHEMATICS	70,261.00	29,921.75	9,071.76	31,267.49
FINE ARTS	133,974.00	85,839.76	12,267.41	35,866.83
PHYSICAL EDUCATION	72,521.00	24,373.15	9,609.92	38,537.93
SCIENCE	99,481.00	37,299.24	367.44	61,814.32
SOCIAL STUDIES	78,847.00	16,438.55	7,145.41	55,263.04
INSTRUCTIONAL TECHNOLOGY	87,909.00	43,021.51	0.00	44,887.49
GUIDANCE	26,180.00	8,793.44	2,548.18	14,838.38
ART	125,798.00	80,993.46	8,358.65	36,445.89
BLDG ADMIN SERVICES	2,310,610.00	1,016,790.56	188,876.49	1,104,942.95
AUDIO VISUAL SERVICES	5,100.00	30.40	0.00	5,069.60
BUSINESS EDUCATION	35,454.00	11,390.17	2,559.37	21,504.46
MODERN CLASSICAL LANG	39,963.00	14,151.78	0.00	25,811.22
FAMILY AND CONSUMER SC	84,167.00	33,675.44	832.05	49,659.51
INDUSTRIAL ARTS	46,751.00	21,626.72	706.95	24,417.33
STUDENT BODY ACT	141,359.00	60,547.13	64,336.33	16,475.54
COOP VOC ED	2,590.00	213.76	1,896.88	479.36
UNIFIED STUDIES	3,322.00	1,952.17	544.36	825.47
SPEECH	21,742.00	13,924.21	-11.90	7,829.69
LIBRARY SVCS	90,941.00	67,860.82	31,069.59	-7,989.41
HEALTH ED	9,015.00	2,961.80	462.43	5,590.77
EEE CAMP	1,625.00	494.69	0.00	1,130.31
ESOL	1,312.00	643.25	0.00	668.75
GIFTED EDUCATION	12,001.00	2,789.40	0.00	9,211.60
INSTRUCTIONAL STAFFING	2,900,000.00	1,282,669.04	0.00	1,617,330.96
ATHLETICS	949,786.00	579,822.54	178,423.94	191,539.52
ADULT BASIC EDUCATION	187,274.00	81,977.94	6,807.85	98,488.21
SWIM CLUB	139,600.00	54,459.90	28,718.00	56,422.10
EARLY CHILDHOOD	93,000.00	25,165.70	33.14	67,801.16
PRESCHOOLS	276,455.00	154,128.41	1,081.86	121,244.73
PARK ROCK COMM ED	1,214,270.00	14,524.56	0.00	1,199,745.44
STUDENT SERVICES	127,521.00	9,503.00	0.00	118,018.00
PUPIL PERSONNEL	245,421.00	107,943.96	582.49	136,894.55
HEALTH SERVICES	258,590.00	66,327.75	20,505.30	171,756.95
GUIDANCE AND COUNSELING	87,936.00	59,621.20	5,849.98	22,464.82

**Parkway School District  
Program Budget - Programs Recap Report**

Fiscal Year 2021 Through Period 10    Run Date: 05-20-2021 @ 09:15:59

	Budget	Expended	Encumbrances	Unexpended
SEB SUPPORT	103,205.00	49,186.60	3,334.00	50,684.40
DATA MGMT/RESEARCH	83,802.00	58,547.55	0.00	25,254.45
STUDENT DISC & ALT STUDIES	9,450.00	1,369.75	19.30	8,060.95
SPECIAL SERVICES	93,286.00	24,989.60	7,000.00	61,296.40
ASST SUPER OF STUDENT SERV	203,514.00	52,397.59	4,099.53	147,016.88
TEACH LEARN ACCOUNTABILITY	2,791,121.00	1,623,290.10	691,653.52	476,177.38
PROFESSIONAL LEARNING	296,833.00	55,267.21	4,197.50	237,368.29
READING DIAGNOSTICS	71,504.00	62,296.51	0.00	9,207.49
INSTRUC TECH LIBRARY MEDIA	429,912.00	350,412.52	64,530.36	14,969.12
STUDENT ASSESSMENT	216,753.00	58,690.71	101,464.00	56,598.29
ELEM COMM ARTS	5,430.00	2,071.60	162.06	3,196.34
ELEM SOC STUDIES	17,813.00	17,563.00	0.00	250.00
ELEM MATH	7,000.00	8,995.82	0.00	-1,995.82
ELEM SCIENCE	6,587.00	355.48	0.00	6,231.52
MIDD ELA	1,975.00	0.00	0.00	1,975.00
MIDD SOC STUDIES	500.00	89.00	0.00	411.00
MIDD MATH	10,000.00	253.93	0.00	9,746.07
MIDD SCIENCE	8,625.00	93.00	0.00	8,532.00
HIGH ELA	6,329.00	856.75	0.00	5,472.25
HIGH SOC STUDIES	1,070.00	247.79	0.00	822.21
HIGH MATH	1,700.00	0.00	0.00	1,700.00
HIGH SCIENCE	955.00	947.20	0.00	7.80
FINE ARTS	118,903.00	54,750.55	34,048.30	30,104.15
PHYSICAL EDUC	2,665.00	1,527.65	0.00	1,137.35
GIFTED	23,700.00	17,561.02	0.00	6,138.98
ESOL	29,762.00	18,042.16	1,029.10	10,690.74
WORLD LANGUAGE	11,148.00	11,142.02	0.00	5.98
CAREER & TECH ED	3,625.00	2,238.05	0.00	1,386.95
CHOICE	400,225.00	250,351.03	77,869.01	72,004.96
INSTRUCTIONAL TECHNOLOGY	5,500.00	1,159.96	0.00	4,340.04
PATH	16,715.00	2,722.21	0.00	13,992.79
OUTDOOR SCHOOL	30,850.00	-3,013.32	0.00	33,863.32
SUMMER SCHOOL	160,000.00	10,348.23	20,086.00	129,565.77
BOARD OF EDUCATION	157,941.00	48,465.90	0.00	109,475.10
SUPERINTENDENT	45,000.00	4,907.11	0.00	40,092.89
DISTRICT DUES	159,040.00	155,803.51	0.00	3,236.49

**Parkway School District  
Program Budget - Programs Recap Report**

Fiscal Year 2021 Through Period 10    Run Date: 05-20-2021 @ 09:15:59

	<b>Budget</b>	<b>Expended</b>	<b>Encumbrances</b>	<b>Unexpended</b>
LEGAL SERVICES	218,549.00	134,252.25	58,429.00	25,867.75
DEPUTY SUPERINTENDENT	133,484.00	54,728.67	0.00	78,755.33
CHIEF FINANCIAL OFFICER	9,697.00	2,566.69	433.15	6,697.16
COMMUNICATIONS	170,176.00	70,035.17	6,204.91	93,935.92
SAFETY SECURITY	783,633.00	511,348.33	262,831.58	9,453.09
SPECIAL PROJECTS	2,051,332.00	1,000,905.57	122,278.09	928,148.34
FINANCE	117,427.00	54,638.35	7,961.76	54,826.89
INTERNAL EQUIP FIN	478,448.00	354,208.05	157,596.39	-33,356.44
RISK MGMT	1,750,216.00	1,760,391.36	0.00	-10,175.36
FOOD SERVICES	2,577,071.46	988,496.12	398,295.07	1,190,280.27
PURCHASING	51,760.00	37,737.97	0.00	14,022.03
PRINT SHOP	-30,185.00	-6,173.04	21,180.51	-45,192.47
SCHOOL STORES	22,950.00	-5,927.60	29,395.85	-518.25
WAREHOUSE	43,303.00	27,166.67	10,139.76	5,996.57
MAILROOM	21,600.00	14,427.29	1,591.63	5,581.08
TECHNOLOGY	3,188,490.00	2,194,207.52	65,493.28	928,789.20
HUMAN RESOURCES	162,152.00	25,038.90	9,229.47	127,883.63
TRANSPORTATION	2,300,020.00	2,099,237.57	117,890.33	82,892.10
SSD TRANSPORTATION	245,970.00	1,786.98	0.00	244,183.02
STUDENTS IN TRANSITION	1,050,000.00	200,138.07	211,333.47	638,528.46
FACILITY OPERATIONS	400,900.00	148,879.84	132,548.06	119,472.10
FACILITY MAINTENANCE	1,012,795.00	998,013.61	447,100.84	-432,319.45
GROUNDS MAINTENANCE	758,634.00	371,189.88	285,502.68	101,941.44
PLANNING	1,430,643.00	807,287.10	529,180.14	94,175.76
ENVIRONMENTAL SVCS	252,200.00	69,549.09	135,562.05	47,088.86
FACILITY MANAGEMENT	609,402.00	399,850.93	142,974.24	66,576.83
REBATE PROJECTS	385,125.00	-5,455.00	218,987.00	171,593.00
ENERGY SERVICES	4,090,000.00	2,243,271.16	1,379,880.00	466,848.84
SUSTAINABILITY	860,559.00	273,639.97	326,998.75	259,920.28
2014 BOND	453,263.00	338,552.57	48,364.50	66,345.93
2018 BOND	36,852,569.28	20,338,441.40	13,498,915.03	3,015,212.85
DEBT SERVICE	22,137,000.00	22,776,299.12	4,281.00	-643,580.12
FEDERAL GRANTS	271,708.00	468,243.41	43,985.86	-240,521.27
LOCAL GRANTS	27,200.00	14,466.60	10,650.00	2,083.40
STUDENT ACTIVITIES	4,496,294.29	519,726.99	168,006.02	3,808,561.28

# **Parkway School District Program Budget - Programs Recap Report**

Fiscal Year 2021 Through Period 10    Run Date: 05-20-2021 @ 09:15:59

	<b>Budget</b>	<b>Expended</b>	<b>Encumbrances</b>	<b>Unexpended</b>
<b>Grand Total for Funds 10-12</b>	<b>37,196,017.75</b>	<b>18,170,970.47</b>	<b>5,861,009.69</b>	<b>13,164,037.59</b>
<b>Grand Total for Fund 20</b>	<b>3,120,623.00</b>	<b>1,314,565.95</b>	<b>0.00</b>	<b>1,806,057.05</b>
<b>Grand Total for Fund 30</b>	<b>22,137,000.00</b>	<b>22,776,299.12</b>	<b>4,281.00</b>	<b>-643,580.12</b>
<b>Grand Total for Funds 40-41</b>	<b>5,770,897.00</b>	<b>3,704,463.61</b>	<b>1,089,547.31</b>	<b>3,992,098.93</b>
 <b>Grand Total All</b>	 <b>105,077,107.03</b>	 <b>66,304,740.55</b>	 <b>20,453,753.03</b>	 <b>18,318,613.45</b>

- **GLOSSARY**

ACCOUNTS PAYABLE - Unpaid amounts currently owed to vendors for goods and services provided.

ACCOUNTS RECEIVABLE - Revenues earned but not yet received by the District.

AMOUNT PROVIDED FOR BOND PRINCIPAL - Amount available to meet current and future bond payments.

AMOUNT TO BE PROVIDED FOR PRINCIPAL AND INTEREST - The amount of funds needed to repay remaining bonded indebtedness. This is a “memo type” entry and does not represent an actual accumulation of cash.

BONDS AND INTEREST PAYABLE - CURRENT - Amount of bond principal and interest payable in future years.

CONSTRUCTION IN PROGRESS - Amounts expended to date on construction projects not completed. When completed, this account is reduced by the total cost of the completed projects.

ENCUMBRANCES - Obligations in the form of purchase orders, contracts, salary commitments, etc. for which a budgeted appropriation has been made.

EQUITY IN GENERAL FIXED ASSETS - Represents the appropriation of funds over a number of years to acquire land, buildings / improvements, and equipment. It is an offset to the respective asset accounts.

FUND BALANCE - The excess of assets over liabilities, which represent the “net worth” of a fund.

FUNDS - The four basic funds and their purposes are:

Capital Projects (Building) - Only capital equipment and building additions / alterations can be charged to this fund. Primary sources of revenue are property / delinquent taxes, building leases, investment income and sale of bonds.

Debt Service - Bond principal, interest and fees associated with the issue and redemption of bonds are the only expenses chargeable to this fund. Primary sources of revenue are property / delinquent taxes and investment income.

General (Incidental) - Expenses not specifically chargeable to other funds are charged to this fund. Primary sources of revenue are property / delinquent taxes, sales tax, investment income, minimum guarantee, VST, textbook, transportation and food service.



Special Revenue (Teachers) - Only salaries for certificated personnel and the cost medical / dental / vision / life insurance can be charged to this fund. Primary sources of revenue are property / delinquent taxes, investment income, state utility tax, minimum guarantee and VST.

INVENTORIES - Value of consumables purchased for future use.

PREPAID EXPENSES - Services paid for in advance of use (e.g. insurance).

RESERVE - Portion of the fund balance which is segregated for a future use and, therefore, not available for future appropriation.

RESERVE FOR BUDGETED ENCUMBRANCE - Funds budgeted and encumbered but not yet spent.

RESTRICTED RESERVE - Balances in the General Fund or Capital Projects Fund restricted as to the use (e.g. future medical / dental benefits) or unspent bond issue funds.

UNREALIZED REVENUES - Revenues budgeted but not yet realized.

UNSPENT BUDGETED FUNDS - Funds budgeted but not expended or encumbered.



## FOR MONTH OF: APRIL – FY21

Attached is a list (alphabetical by vendor) of purchase orders and order for payments \$500 to \$15,000 and \$15,000 + which the administration has approved in accordance with Policy #DJE BP

Reports per DIC.BP

c: Patty Bedborough, Brian Whittle, Erik Lueders

**ORDER FOR PAYMENT**

**\$500 - \$15,000**

**APRIL FY21**

<b>VENDOR</b>	<b>VENDOR NAME</b>	<b>OBJECT</b>	<b>DOCUMENT</b>	<b>AMOUNT</b>	<b>WARRANT</b>	<b>CHECK #</b>	<b>INVOICE</b>
737616	ADVERTISING PREMIUM	6391	439926	\$ 702.46		0	098544
737616	ADVERTISING PREMIUM	6391	440562	\$ 1,292.46		0	098542
737616	ADVERTISING PREMIUM	6391	440564	\$ 1,558.91		0	098543
700592	AMAZON	6411	440539	\$ 629.65		0	440539
700592	AMAZON	6411	440337	\$ 714.00		0	440337
700592	AMAZON	6411	440342	\$ 749.85		0	440342
700592	AMAZON	6411	440336	\$ 759.86		0	440336
700592	AMAZON	6411	440355	\$ 819.74		0	440355
700592	AMAZON	6543	440555	\$ 1,199.75		0	440555
625622	AMERICAN TRAILER &	6339	439107	\$ 615.00	042221	6655	150489-0021
300092	AT&T MOBILITY	6361	439952	\$ 1,945.09		0	0826811811-022521
300092	AT&T MOBILITY	6361	439953	\$ 2,666.63		0	834829586X02202021
700085	BATTERIES PLUS BULBS	6411	438467	\$ 536.50	041521	6623	P38261713
999997	BOOK REVUE	6411	440372	\$ 589.80		0	816825
300225	CHARTER COMMUNICATIO	6361	439950	\$ 1,717.23		0	0019201021121
300225	CHARTER COMMUNICATIO	6361	439951	\$ 1,717.23		0	0019201031121
600935	CPI-CRISIS PREVENTIO	6312	439455	\$ 1,199.00		0	155735
601984	ELLIOTT DATA SYSTEMS	6411	439404	\$ 670.00	REG	509602	123359
601021	FROST ELECTRIC SUPPL	6411	437721	\$ 532.26	040821	6601	S4270417.001
601021	FROST ELECTRIC SUPPL	6411	439779	\$ 686.14	042921	6688	S4267464.001
999997	GRAMMARLY CO4ABHGM2	6451	440503	\$ 1,200.00		0	440503
999997	GRAMMARLY CO5HR6CE5	6451	440504	\$ 1,200.00		0	440504
999997	GRAMMARLY COHXQXPXF	6451	440506	\$ 1,200.00		0	440506
999997	GRAMMARLY COMPIFQ65	6451	440507	\$ 1,200.00		0	440507
999997	GRAMMARLY COXR6VLLH	6451	440508	\$ 1,200.00		0	440508
801102	GRAYBAR ELEC CO	6411	437724	\$ 729.00	REG	509021	9320785025
801102	GRAYBAR ELEC CO	6543	440589	\$ 552.70		0	9320656200
800066	INDUSTRIAL SOAP CO	6411	439109	\$ 525.00	042921	6690	1351539
801304	KAEMMERLEN PARTS & S	6332	439012	\$ 673.80	042221	6667	W74216
848234	KRUEGER POTTERY	6411	439195	\$ 511.50	EARLY	509470	90797
301546	METROPOLITAN SEWER D	6335	440441	\$ 510.84		0	440441
301546	METROPOLITAN SEWER D	6335	440408	\$ 650.84		0	440408
301546	METROPOLITAN SEWER D	6335	440410	\$ 990.84		0	440410
301546	METROPOLITAN SEWER D	6335	440414	\$ 1,235.84		0	440414
301546	METROPOLITAN SEWER D	6335	440391	\$ 1,735.84		0	440391
301546	METROPOLITAN SEWER D	6335	440429	\$ 2,234.60		0	440429
301546	METROPOLITAN SEWER D	6335	440399	\$ 2,564.60		0	440399
302317	MISSOURI AMERICAN WA	6335	440474	\$ 512.17		0	440474
302317	MISSOURI AMERICAN WA	6335	440497	\$ 562.43		0	440497
302317	MISSOURI AMERICAN WA	6335	440498	\$ 593.29		0	440498

VENDOR	VENDOR NAME	OBJECT	DOCUMENT	AMOUNT	WARRANT	CHECK #	INVOICE
302317	MISSOURI AMERICAN WA	6335	440446	\$ 633.10		0	440446
302317	MISSOURI AMERICAN WA	6335	440463	\$ 738.55		0	440463
302317	MISSOURI AMERICAN WA	6335	440500	\$ 743.67		0	440500
302317	MISSOURI AMERICAN WA	6335	440447	\$ 761.53		0	440447
302317	MISSOURI AMERICAN WA	6335	440459	\$ 838.45		0	440459
302317	MISSOURI AMERICAN WA	6335	440449	\$ 927.77		0	440449
302317	MISSOURI AMERICAN WA	6335	440453	\$ 1,001.95		0	440453
302317	MISSOURI AMERICAN WA	6335	440454	\$ 1,001.95		0	440454
302317	MISSOURI AMERICAN WA	6335	440456	\$ 1,001.95		0	440456
302317	MISSOURI AMERICAN WA	6335	440457	\$ 1,001.95		0	440457
302317	MISSOURI AMERICAN WA	6335	440468	\$ 1,001.95		0	440468
814868	MISSOURI VOCATIONAL	6411	438468	\$ 822.50	REG	509222	624103 RI
819939	NATIONAL FOOTBALL	6319	439726	\$ 550.00	EARLY	509548	FOOTBALLBANQUET20 21
808408	PROJECT LEAD THE WAY	6319	439946	\$ 1,500.00		0	270502
808408	PROJECT LEAD THE WAY	6319	439947	\$ 1,500.00		0	271970
808408	PROJECT LEAD THE WAY	6411	439934	\$ 1,936.50		0	439934
999997	SAMSCLUB.COM	6411	440533	\$ 857.76		0	440533
622897	SCHOOL DISTRICT OF C	6391	437605	\$ 512.45	EARLY	509148	ENTRY-VGBSKTBL- NORTH
999997	SHEET2API	6412	440583	\$ 503.84		0	440583
914156	THEATRICAL RIGHTS	6391	439808	\$ 675.00	REG	0	SO-0057588
300044	VERIZON WIRELESS	6361	439956	\$ 3,830.87		0	9874521425
934817	VOSS LIGHTING	6411	438186	\$ 740.28	041521	6651	18067982-00
912473	WINNING STREAK	6411	437712	\$ 517.20	041521	6653	185815
912473	WINNING STREAK	6411	437592	\$ 553.20	040821	6620	186134
912473	WINNING STREAK	6411	439694	\$ 618.00	042921	6704	186554
915806	WM OF ST LOUIS-SOUTH	6339	439966	\$ 5,546.75		0	0021976-2754-6
TOTAL:				\$ 30,317.17			

## PURCHASE ORDERS

\$500 - \$15,000

APRIL FY 21

PO#	Vendor Name	PO Date	Order Amount	Balance	Status	1st GL Account
97210082	ADGRAPHIX	4/12/21	\$ 600.00	\$ 420.00	8 - Printed	10.2552.512.0080.641
63210220	AFTERMARKET TECHNOLOGIES, INC.	4/27/21	\$ 3,469.37	\$ 3,469.37	8 - Printed	40.1321.113.1050.654
50210064	AIA CORPORATION	4/12/21	\$ 1,875.00	\$ 1,875.00	8 - Printed	11.1411.900.1050.641
2210022	AKJ WHOLESALE, LLC	4/12/21	\$ 3,424.56	\$ 3,424.56	8 - Printed	10.1111.102.4040.641
58210118	ALL VOLLEYBALL INC	4/19/21	\$ 987.60	\$ -	0 - Closed	10.1421.117.1090.641
85210336	AMERICAN TRAILER & STORAGE, INC	4/13/21	\$ 4,000.00	\$ 3,561.93	8 - Printed	10.2573.508.0085.633
63210216	APPLE INC.	4/9/21	\$ 1,199.00	\$ -	0 - Closed	10.0000.000.0000.215
63210214	APPLE INC.	4/7/21	\$ 9,495.00	\$ -	0 - Closed	40.1351.805.0075.654
85210347	ARAMSCO, INC.	4/27/21	\$ 7,814.16	\$ 7,814.16	8 - Printed	40.2542.551.0085.654
58210121	AVA RINKLIN	4/20/21	\$ 2,000.00	\$ -	0 - Closed	11.3911.900.1090.639
56210140	B & H PHOTO & ELECTRONICS CORP.	4/20/21	\$ 720.70	\$ 720.70	8 - Printed	10.1151.110.1075.641
63210221	B & H PHOTO & ELECTRONICS CORP.	4/27/21	\$ 2,185.82	\$ 2,185.82	8 - Printed	40.2411.111.3000.654
58210114	BELUSA LLC	4/12/21	\$ 2,928.46	\$ -	0 - Closed	10.2411.111.1090.641
50210063	BEST BUY BUSINESS ADVANTAGE ACCOUNT	4/12/21	\$ 1,166.29	\$ -	0 - Closed	10.1151.122.1050.641
62210252	BEST BUY BUSINESS ADVANTAGE ACCOUNT	4/8/21	\$ 3,454.00	\$ -	0 - Closed	10.3711.805.0075.641
54210121	BLICK ART MATERIALS	4/1/21	\$ 1,745.58	\$ -	0 - Closed	10.1151.110.1080.641
18210009	BLOOM SOFTWARE INC.	4/19/21	\$ 2,600.00	\$ -	0 - Closed	10.1111.108.4235.641
58210120	BROWN, SHARLI	4/20/21	\$ 2,000.00	\$ -	0 - Closed	11.3911.900.1090.639
50210075	CARROLLTON SPECIALTY PRODUCTS COMPANY	4/27/21	\$ 985.80	\$ 985.80	8 - Printed	10.1151.111.1050.641
58210125	CARROLLTON SPECIALTY PRODUCTS COMPANY	4/28/21	\$ 3,835.00	\$ 3,835.00	8 - Printed	10.2411.111.1090.641
73210040	CARROLLTON SPECIALTY PRODUCTS COMPANY	4/20/21	\$ 10,000.00	\$ 8,770.05	8 - Printed	11.1421.900.0075.641
58210122	CASUAL TEES	4/21/21	\$ 2,498.40	\$ -	0 - Closed	10.1151.111.1090.641
58210111	CASUAL TEES	4/1/21	\$ 2,528.75	\$ -	0 - Closed	10.1151.111.1090.641
83210129	CENGAGE LEARNING, INC	4/1/21	\$ 1,100.00	\$ -	0 - Closed	10.2222.355.1080.645
93210016	COLUMBIA PUBLIC SCHOOLS	4/8/21	\$ 1,000.00	\$ -	0 - Closed	10.3512.208.7500.631
85210340	COMPI DISTRIBUTORS, INC	4/20/21	\$ 6,336.09	\$ 6,336.09	8 - Printed	10.2411.111.4020.641
63210209	CONVERGENT COMMUNICATIONS-ST.LOUIS,INC	4/6/21	\$ 10,552.58	\$ -	0 - Closed	10.2331.510.0070.636
63210210	CONVERGEONE, INC	4/6/21	\$ 6,489.00	\$ 6,489.00	8 - Printed	10.2331.510.0070.631
36210005	CPI-CRISIS PREVENTION INSTITUTE, INC.	4/12/21	\$ 7,218.10	\$ -	0 - Closed	10.1251.305.0075.631
50210070	CROCK, WINIFRED	4/20/21	\$ 1,600.00	\$ -	0 - Closed	10.1151.111.1050.631
63210217	CRW CONSULTING, LLC	4/12/21	\$ 3,500.00	\$ -	0 - Closed	10.2331.510.0070.631
48210269	DH PACE COMPANY	4/29/21	\$ 2,575.35	\$ 2,575.35	8 - Printed	48.4051.618.4060.652
48210272	DH PACE COMPANY	4/29/21	\$ 2,586.05	\$ 2,586.05	8 - Printed	48.4051.618.4040.652
48210267	DH PACE COMPANY	4/29/21	\$ 2,681.60	\$ 2,681.60	8 - Printed	48.4051.618.4220.652
48210258	DH PACE COMPANY	4/19/21	\$ 2,920.50	\$ 2,920.50	8 - Printed	48.4051.618.4100.652
48210268	DH PACE COMPANY	4/29/21	\$ 2,967.90	\$ 2,967.90	8 - Printed	48.4051.618.4180.652
48210257	DH PACE COMPANY	4/19/21	\$ 3,128.25	\$ 3,128.25	8 - Printed	48.4051.618.4130.652
48210271	DH PACE COMPANY	4/29/21	\$ 3,220.30	\$ 3,220.30	8 - Printed	48.4051.618.4120.652
48210270	DH PACE COMPANY	4/29/21	\$ 3,619.10	\$ 3,619.10	8 - Printed	48.4051.618.4030.652
48210256	DH PACE COMPANY	4/19/21	\$ 3,996.75	\$ 3,996.75	8 - Printed	48.4051.618.4245.652
48210259	DH PACE COMPANY	4/19/21	\$ 6,934.25	\$ 6,934.25	8 - Printed	48.4051.618.3020.652
93210017	EARLY CHILDHOOD, LLC	4/8/21	\$ 879.61	\$ 879.61	8 - Printed	10.3512.208.7500.641
62210255	EDUCATION TECHNOLOGY PARTNERS, INC.	4/19/21	\$ 1,840.00	\$ -	0 - Closed	10.3711.805.0075.631

PO#	Vendor Name	PO Date	Order Amount	Balance	Status	1st GL Account
62210249	EL DORADO TRADING GROUP, INC	4/6/21	\$ 10,784.45	\$ 6,824.85	8 - Printed	10.1151.351.1090.641
56210137	FOGARTY SERVICES, IN	4/19/21	\$ 3,000.00	\$ 3,000.00	8 - Printed	10.2411.111.1075.639
83210146	FOLLETT SCHOOL SOLUTIONS, INC	4/8/21	\$ 605.82	\$ 605.82	8 - Printed	10.2222.355.3040.641
58210119	FOLLETT SCHOOL SOLUTIONS, INC	4/20/21	\$ 727.35	\$ 727.35	8 - Printed	10.1151.102.1090.643
83210131	FOLLETT SCHOOL SOLUTIONS, INC	4/6/21	\$ 1,006.47	\$ 1,006.47	8 - Printed	10.2222.355.4180.641
83210132	FOLLETT SCHOOL SOLUTIONS, INC	4/6/21	\$ 1,017.38	\$ 1,017.38	8 - Printed	10.2222.355.4200.644
83210140	FOLLETT SCHOOL SOLUTIONS, INC	4/7/21	\$ 1,033.44	\$ 1,033.44	8 - Printed	10.2222.355.4260.641
62210257	FOLLETT SCHOOL SOLUTIONS, INC	4/21/21	\$ 1,096.40	\$ 1,096.40	8 - Printed	10.1151.351.1075.643
83210126	FOLLETT SCHOOL SOLUTIONS, INC	4/1/21	\$ 1,301.50	\$ 1,301.50	8 - Printed	10.2222.355.4210.641
83210142	FOLLETT SCHOOL SOLUTIONS, INC	4/7/21	\$ 1,320.90	\$ 1,320.90	8 - Printed	10.2222.355.4220.641
83210139	FOLLETT SCHOOL SOLUTIONS, INC	4/7/21	\$ 1,459.43	\$ 1,459.43	8 - Printed	10.2222.355.4260.644
83210134	FOLLETT SCHOOL SOLUTIONS, INC	4/6/21	\$ 1,607.85	\$ 1,607.85	8 - Printed	10.2222.355.4030.644
83210127	FOLLETT SCHOOL SOLUTIONS, INC	4/1/21	\$ 2,311.00	\$ 2,311.00	8 - Printed	10.2222.355.4210.644
83210128	FOLLETT SCHOOL SOLUTIONS, INC	4/1/21	\$ 2,922.47	\$ 2,922.47	8 - Printed	10.2222.355.4035.644
83210138	FOLLETT SCHOOL SOLUTIONS, INC	4/6/21	\$ 2,934.80	\$ 2,934.80	8 - Printed	10.2222.355.4040.644
83210135	FOLLETT SCHOOL SOLUTIONS, INC	4/6/21	\$ 3,018.86	\$ 3,018.86	8 - Printed	10.2222.355.3040.644
83210125	FOLLETT SCHOOL SOLUTIONS, INC	4/1/21	\$ 3,179.82	\$ 3,179.82	8 - Printed	10.2222.355.3000.644
83210137	FOLLETT SCHOOL SOLUTIONS, INC	4/6/21	\$ 3,812.24	\$ 3,812.24	8 - Printed	10.2222.355.1080.644
62210258	FOLLETT SCHOOL SOLUTIONS, INC	4/21/21	\$ 4,312.94	\$ 4,312.94	8 - Printed	10.1151.351.1050.643
83210145	FOLLETT SCHOOL SOLUTIONS, INC	4/8/21	\$ 4,596.24	\$ 4,596.24	8 - Printed	10.2222.355.4220.644
83210141	FOLLETT SCHOOL SOLUTIONS, INC	4/7/21	\$ 4,706.04	\$ 4,706.04	8 - Printed	10.2222.355.1090.644
62210251	FOLLETT SCHOOL SOLUTIONS, INC	4/8/21	\$ 6,078.12	\$ 6,078.12	8 - Printed	10.1251.805.4035.641
12210005	FRANCIS HOWELL SCHOOL DISTRICT	4/1/21	\$ 2,000.00	\$ -	0 - Closed	10.2213.111.4120.631
15210008	FRANKLIN COVEY CLIENT SALES, INC	4/20/21	\$ 5,500.00	\$ 5,500.00	8 - Printed	10.2411.111.4030.637
54210125	GOPHER SPORT	4/12/21	\$ 2,092.77	\$ 2,092.77	8 - Printed	10.1151.105.1080.641
48210263	GRAYBAR ELEC CO	4/28/21	\$ 524.10	\$ 524.10	8 - Printed	48.2331.618.0070.654
63210215	GRAYBAR ELEC CO	4/8/21	\$ 732.62	\$ 673.73	8 - Printed	10.2331.510.0070.641
40210011	HERFF JONES INC	4/7/21	\$ 4,796.15	\$ 4,796.15	8 - Printed	11.1411.900.3020.641
40210013	HOME DEPOT	4/20/21	\$ 1,511.97	\$ 1,511.97	8 - Printed	10.2411.111.3020.641
65210026	HOW ARE THE CHILDREN	4/12/21	\$ 1,250.00	\$ -	0 - Closed	10.2112.302.0070.631
63210213	IMRON CORPORATION	4/6/21	\$ 5,000.00	\$ 5,000.00	8 - Printed	10.2331.510.0070.633
54210126	IT SUPPLIES, INC.	4/19/21	\$ 2,545.00	\$ 2,545.00	8 - Printed	40.2411.111.1080.654
56210130	JOSTENS INC	4/12/21	\$ 1,014.50	\$ 1,014.50	8 - Printed	11.1411.900.1075.641
50210067	JOSTENS INC	4/13/21	\$ 1,316.00	\$ -	0 - Closed	10.2411.111.1050.641
50210068	JOSTENS INC	4/13/21	\$ 7,397.15	\$ 7,397.15	8 - Printed	11.1411.900.1050.641
85210335	KEY EQUIPMENT & SUPPLY CO.	4/9/21	\$ 2,700.00	\$ 2,700.00	8 - Printed	10.2542.552.0085.633
85210332	KIESEL COMPANY	4/6/21	\$ 5,463.86	\$ -	0 - Closed	10.2541.556.0085.648
85210348	KIESEL COMPANY	4/27/21	\$ 5,863.50	\$ -	0 - Closed	10.2541.556.0085.648
56210135	KRUEGER POTTERY	4/14/21	\$ 748.94	\$ 748.94	8 - Printed	10.1151.110.1075.641
65210025	KUNA MEAT COMPANY	4/12/21	\$ 1,985.50	\$ -	0 - Closed	11.3911.900.0075.641
62210272	MACMILLAN HOLDINGS, LLC	4/29/21	\$ 9,680.31	\$ 9,680.31	8 - Printed	10.1151.351.1080.641
62210270	MACMILLAN HOLDINGS, LLC	4/29/21	\$ 12,584.40	\$ 12,584.40	8 - Printed	10.1151.351.1075.641
62210269	MACMILLAN HOLDINGS, LLC	4/29/21	\$ 14,520.47	\$ 14,520.47	8 - Printed	10.1151.351.1050.641
63210211	MIDWEST COMPUTECH INC.	4/6/21	\$ 2,892.00	\$ -	0 - Closed	10.2331.510.0070.633
62210268	MILFORD SUPPLY COMPANY INC	4/29/21	\$ 1,493.00	\$ 1,493.00	8 - Printed	10.3711.805.0075.641
5210018	MIRACLE RECREATION EQUIPMENT	4/29/21	\$ 1,986.50	\$ 1,986.50	8 - Printed	11.1411.900.4160.641
5210017	MIRACLE RECREATION EQUIPMENT	4/6/21	\$ 2,247.82	\$ 2,247.82	8 - Printed	41.1111.900.4160.654
62210259	MO RESTAURANT ASSOCIATION	4/21/21	\$ 1,260.00	\$ -	0 - Closed	10.1331.805.1090.631

PO#	Vendor Name	PO Date	Order Amount	Balance	Status	1st GL Account
85210334	MPGTANDEM	4/8/21	\$ 1,500.00	\$ 1,500.00	8 - Printed	10.2542.551.0085.641
56210125	MU ALPHA THETA	4/7/21	\$ 660.00	\$ 660.00	8 - Printed	11.1411.900.1075.641
62210261	MUNSON, STEWART	4/21/21	\$ 1,199.98	\$ -	0 - Closed	10.1151.351.1080.641
62210260	MUNSON, STEWART	4/21/21	\$ 1,999.97	\$ -	0 - Closed	10.1151.351.1090.641
62210250	MUSSO, PETER	4/7/21	\$ 1,835.12	\$ -	0 - Closed	10.3711.805.0075.641
58210117	MYRON CORP	4/12/21	\$ 986.88	\$ 986.88	8 - Printed	10.1321.119.1090.641
61210045	NATIVE LANDSCAPE SOLUTIONS	4/1/21	\$ 14,738.10	\$ 14,738.10	8 - Printed	10.2543.561.0085.631
74210011	NATL BOARD/PROF TEACH STANDARD	4/21/21	\$ 950.00	\$ 950.00	8 - Printed	10.2213.352.1075.631
85210345	NEGWER MATERIALS INC.	4/21/21	\$ 4,682.72	\$ 4,682.72	8 - Printed	10.2211.386.0075.641
9210014	NORFOLK, ROBERT	4/12/21	\$ 600.00	\$ -	0 - Closed	11.1111.900.4060.639
56210124	NOTTELMANN MUSIC CO	4/1/21	\$ 2,000.00	\$ 1,400.00	8 - Printed	10.1151.104.1075.633
23210023	OFFICE ESSENTIALS INCORPORATED	4/19/21	\$ 604.24	\$ 604.24	8 - Printed	10.1111.111.4190.641
50210065	OFFICE ESSENTIALS INCORPORATED	4/13/21	\$ 632.36	\$ 632.36	8 - Printed	10.2122.109.1050.641
10210023	OFFICE ESSENTIALS INCORPORATED	4/12/21	\$ 716.59	\$ 87.11	8 - Printed	10.1111.110.4200.641
40210015	OFFICE ESSENTIALS INCORPORATED	4/28/21	\$ 830.60	\$ 830.60	8 - Printed	10.2411.109.3020.641
50210071	OFFICE ESSENTIALS INCORPORATED	4/20/21	\$ 1,085.22	\$ 1,085.22	8 - Printed	10.2122.109.1050.641
40210017	OFFICE ESSENTIALS INCORPORATED	4/29/21	\$ 1,694.87	\$ 1,694.87	8 - Printed	11.1131.900.3020.641
58210116	OFFICE ESSENTIALS INCORPORATED	4/12/21	\$ 2,403.73	\$ 2,403.73	8 - Printed	10.1151.104.1090.641
56210129	OFFICE ESSENTIALS INCORPORATED	4/12/21	\$ 2,498.40	\$ 2,498.40	8 - Printed	10.1151.103.1075.641
45210008	OFFICE ESSENTIALS INCORPORATED	4/14/21	\$ 3,636.13	\$ 3,636.13	8 - Printed	41.1131.900.3040.654
40210012	OFFICE ESSENTIALS INCORPORATED	4/19/21	\$ 4,354.91	\$ 4,354.91	8 - Printed	10.2411.111.3020.641
43210019	OFFICE ESSENTIALS INCORPORATED	4/19/21	\$ 4,749.27	\$ 4,749.27	8 - Printed	10.2411.111.3080.641
65210030	OFFICE ESSENTIALS INCORPORATED	4/22/21	\$ 5,849.98	\$ 5,849.98	8 - Printed	40.2122.304.0075.654
50210062	OFFICE ESSENTIALS INCORPORATED	4/6/21	\$ 6,856.07	\$ 6,856.07	8 - Printed	10.2222.122.1050.641
58210113	OFFICE ESSENTIALS INCORPORATED	4/6/21	\$ 7,093.43	\$ 7,093.43	8 - Printed	10.2411.107.1090.641
40210014	OFFICE ESSENTIALS INCORPORATED	4/28/21	\$ 11,922.66	\$ 11,922.66	8 - Printed	40.2411.111.3020.654
85210337	OLDHAM CHEMICALS COMPANY INC	4/13/21	\$ 1,000.00	\$ 1,000.00	8 - Printed	10.2542.552.0085.641
74210009	ORTON GILLINGHAM ONLINE ACADEMY LLC	4/19/21	\$ 8,330.00	\$ -	0 - Closed	10.2213.352.4035.631
83210130	OVERDRIVE INC.	4/1/21	\$ 1,114.46	\$ 27.89	8 - Printed	10.2222.355.3000.641
83210147	OVERDRIVE INC.	4/8/21	\$ 1,208.10	\$ 83.90	8 - Printed	10.2222.355.4130.641
83210144	OVERDRIVE INC.	4/7/21	\$ 4,118.51	\$ -	0 - Closed	10.2222.355.1080.641
92210012	PAXEN PUBLISHING LLC	4/8/21	\$ 2,965.83	\$ 2,965.83	8 - Printed	10.1611.205.0075.643
40210016	PEAR DECK INC.	4/28/21	\$ 2,700.00	\$ 2,700.00	8 - Printed	10.1131.111.3020.641
50210066	PREMIER RENTALS	4/13/21	\$ 795.00	\$ 795.00	8 - Printed	11.1411.900.1050.641
85210350	PROFESSIONAL SERVICE INDUSTRIES	4/28/21	\$ 1,556.00	\$ 1,556.00	8 - Printed	40.2542.554.0085.652
48210266	PROFESSIONAL SERVICE INDUSTRIES	4/28/21	\$ 7,732.00	\$ 7,732.00	8 - Printed	48.4031.618.3080.652
48210265	PROFESSIONAL SERVICE INDUSTRIES	4/28/21	\$ 8,525.00	\$ 8,525.00	8 - Printed	48.4051.618.4220.652
48210264	PROFESSIONAL SERVICE INDUSTRIES	4/28/21	\$ 9,578.00	\$ 9,578.00	8 - Printed	48.4051.618.3060.652
62210256	PROJECT LEAD THE WAY INC	4/19/21	\$ 4,898.25	\$ 4,898.25	8 - Printed	10.1371.805.3080.641
54210129	PSB OFFICIATING SERVICES LLC	4/20/21	\$ 1,716.00	\$ -	0 - Closed	11.1421.900.1080.639
58210115	PYRO PIZZA FOOD TRUCK LLC	4/12/21	\$ 2,360.00	\$ -	0 - Closed	10.2411.111.1090.641
48210252	RCC, INC.	4/6/21	\$ 3,499.90	\$ 3,499.90	8 - Printed	48.2331.618.0070.654
50210078	RIDDELL ALL AMERICAN	4/29/21	\$ 2,177.45	\$ 2,177.45	8 - Printed	10.1421.204.1050.641
73210039	ROCKWOOD SCHOOL DISTICT	4/6/21	\$ 1,047.52	\$ -	0 - Closed	10.1421.204.1050.639

PO#	Vendor Name	PO Date	Order Amount	Balance	Status	1st GL Account
62210247	SAGE PUBLICATIONS	4/1/21	\$ 1,394.55	\$ 1,394.55	8 - Printed	10.2213.805.0075.641
75210040	SAGEVIEW CONSULTING GROUP, LLC	4/19/21	\$ 2,500.00	\$ -	0 - Closed	10.2311.501.0070.631
18210008	SCHOLASTIC 3725	4/1/21	\$ 2,634.31	\$ -	0 - Closed	11.1411.900.4235.641
93210018	SCHOOL SPECIALTY,LLC	4/21/21	\$ 664.17	\$ 664.17	8 - Printed	10.3512.208.7500.641
5210016	SCHOOL SPECIALTY,LLC	4/1/21	\$ 769.69	\$ -	0 - Closed	10.1111.110.4160.641
5210019	SCHOOL SPECIALTY,LLC	4/29/21	\$ 1,126.32	\$ 1,126.32	8 - Printed	10.1111.111.4160.641
14210008	SCHOOL SPECIALTY,LLC	4/13/21	\$ 4,641.00	\$ 4,641.00	8 - Printed	10.1111.111.4210.641
63210222	SITY COMMUNICATIONS	4/27/21	\$ 850.00	\$ 850.00	8 - Printed	10.2331.510.0070.641
66210006	SPECIAL SCHOOL DIST. OF ST. LOUIS COUNTY	4/6/21	\$ 3,160.92	\$ -	0 - Closed	10.1221.395.0075.631
39210018	SPRAY SERVICES, INC.	4/6/21	\$ 12,000.00	\$ 12,000.00	8 - Printed	10.2542.555.0085.633
85210333	ST. LOUIS CNTY HEALTH DEPT	4/6/21	\$ 1,416.00	\$ -	0 - Closed	10.2542.552.0085.641
81210051	ST. LOUIS CNTY HEALTH DEPT	4/9/21	\$ 5,211.00	\$ 386.00	8 - Printed	10.2561.504.0085.639
58210123	ST. LOUIS SPORTSWEAR	4/21/21	\$ 2,869.50	\$ 2,869.50	8 - Printed	11.1411.900.1090.641
65210028	SYSCO ST. LOUIS,LLC	4/12/21	\$ 5,084.76	\$ -	0 - Closed	11.3911.900.0075.641
65210027	SYSCO ST. LOUIS,LLC	4/12/21	\$ 8,856.35	\$ -	0 - Closed	11.3911.900.0075.641
85210338	TECH ELECTRONICS INC	4/13/21	\$ 2,389.00	\$ 2,389.00	8 - Printed	40.2542.552.0085.654
81210050	THE BOELTER COMPANIES, INC.	4/1/21	\$ 4,160.00	\$ -	0 - Closed	40.2561.504.0085.654
94210009	TIER ONE TACTICAL SOLUTIONS, LLC.	4/22/21	\$ 1,200.00	\$ -	0 - Closed	10.2546.410.0085.631
56210133	TOLEDO PHYSICAL EDUCATION SUPP	4/13/21	\$ 668.21	\$ 668.21	8 - Printed	10.1151.105.1075.641
56210132	TOLEDO PHYSICAL EDUCATION SUPP	4/13/21	\$ 976.58	\$ 976.58	8 - Printed	10.1151.105.1075.641
33210008	UNION MACHINERY	4/12/21	\$ 3,175.00	\$ 3,175.00	8 - Printed	10.2573.508.0085.633
50210074	VARSITY SPIRIT FASHIONS	4/20/21	\$ 2,447.00	\$ -	0 - Closed	11.1411.900.1050.639
41210015	VIRCO MFG CORP	4/14/21	\$ 3,207.68	\$ 3,207.68	8 - Printed	40.1131.111.3060.654
54210122	VIVIANO'S CHESTERFIELD	4/1/21	\$ 2,000.00	\$ -	0 - Closed	11.1411.900.1080.641
85210339	VOSS LIGHTING	4/19/21	\$ 10,000.00	\$ 10,000.00	8 - Printed	10.2542.552.0085.641
56210142	W. SCHILLER & CO., INC.	4/20/21	\$ 1,591.00	\$ 1,591.00	8 - Printed	10.1151.110.1075.641
50210072	WAGNER PORTRAIT GROUP	4/20/21	\$ 900.00	\$ 900.00	8 - Printed	11.1411.900.1050.639
54210127	WAGNER PORTRAIT GROUP	4/20/21	\$ 1,000.00	\$ 1,000.00	8 - Printed	11.1411.900.1080.641
65210029	WALSH ASSOCIATES,LLC	4/19/21	\$ 700.00	\$ -	0 - Closed	10.2122.304.0075.631
62210262	WCEPS	4/21/21	\$ 1,010.00	\$ -	0 - Closed	10.2123.357.0075.641
50210076	WENGER CORP	4/27/21	\$ 926.30	\$ 926.30	8 - Printed	10.1151.104.1050.641
54210131	WINNING STREAK	4/29/21	\$ 500.00	\$ 500.00	8 - Printed	11.1411.900.1080.641
85210341	WINNING STREAK	4/20/21	\$ 817.08	\$ 817.08	8 - Printed	10.2542.552.0085.641
54210128	WINNING STREAK	4/20/21	\$ 1,100.00	\$ 1,100.00	8 - Printed	11.1411.900.1080.641
56210145	WINNING STREAK	4/28/21	\$ 1,275.40	\$ 1,275.40	8 - Printed	10.2411.111.1075.641
66210007	WINNING STREAK	4/21/21	\$ 1,923.75	\$ 1,923.75	8 - Printed	10.2321.310.0070.636
85210346	WINNING STREAK	4/21/21	\$ 2,065.38	\$ 2,065.38	8 - Printed	10.2542.551.0085.641
50210073	WINNING STREAK	4/20/21	\$ 2,450.00	\$ 2,450.00	8 - Printed	10.1421.117.1050.641
50210069	WINNING STREAK	4/13/21	\$ 3,260.00	\$ 3,260.00	8 - Printed	10.1421.117.1050.641
54210132	WINNING STREAK	4/29/21	\$ 4,000.00	\$ 4,000.00	8 - Printed	11.1421.900.1080.641
58210126	WINNING STREAK	4/28/21	\$ 13,357.50	\$ 13,357.50	8 - Printed	10.1421.117.1090.641
56210134	ZOELLER, CHRIS	4/14/21	\$ 745.60	\$ -	0 - Closed	10.1421.117.1075.641
<b>TOTAL:</b>			<b>\$ 121,024.05</b>			



**15,000+**  
**APRIL FY21**

PO#	Vendor Name	PO Date	Order Amount	Balance	Status	1st GL Account
61210046	AUTOMATIC CONTROLS EQUIP.	4/12/21	\$ 27,447.20	\$ 27,447.20	8 - Printed	10.2542.561.0085.633
62210267	CENGAGE LEARNING, INC	4/29/21	\$ 141,610.00	\$ 141,610.00	8 - Printed	10.1151.351.1050.641
62210266	DESMOS INC	4/26/21	\$ 317,601.00	\$ 317,601.00	8 - Printed	10.1131.351.0075.641
62210264	DISCOVERY EDUCATION, INC	4/26/21	\$ 30,000.00	\$ 30,000.00	8 - Printed	10.1131.351.0075.641
62210265	DISCOVERY EDUCATION, INC	4/26/21	\$ 37,810.00	\$ 37,810.00	8 - Printed	10.1131.351.0075.641
62210263	DREAMBOX LEARNING, INC	4/26/21	\$ 819,000.00	\$ 819,000.00	8 - Printed	10.0000.000.0000.170
65210031	EDUCATIONAL EQUITY CONSULTANTS	4/27/21	\$ 30,875.00	\$ -	0 - Closed	10.2321.310.0070.631
61210047	ENLIGHTED INC	4/29/21	\$ 39,000.00	\$ 39,000.00	8 - Printed	10.2542.561.0085.633
85210344	F J JURCIC CO	4/21/21	\$ 33,096.00	\$ 33,096.00	8 - Printed	40.2542.554.0085.653
48210253	F J JURCIC CO	4/13/21	\$ 43,302.20	\$ 43,302.20	8 - Printed	48.4051.618.1090.652
48210261	F J JURCIC CO	4/21/21	\$ 44,220.80	\$ 44,220.80	8 - Printed	48.4051.618.1090.652
85210349	HILLYARD	4/27/21	\$ 17,756.38	\$ 17,756.38	8 - Printed	40.2542.551.0085.654
62210271	MACMILLAN HOLDINGS, LLC	4/29/21	\$ 24,200.78	\$ 24,200.78	8 - Printed	10.1151.351.1090.641
48210260	MCCARTHY HOLDINGS INC	4/20/21	\$ 591,908.00	\$ 591,908.00	8 - Printed	48.4051.618.0085.652
62210273	MCGRAW-HILL EDUCATION, INC.	4/29/21	\$ 38,238.49	\$ 38,238.49	8 - Printed	10.1151.351.1050.643
48210273	MIDWEST SERVICE GROUP	4/29/21	\$ 135,323.00	\$ 135,323.00	8 - Printed	48.4051.618.1050.652
48210274	MIDWEST SERVICE GROUP	4/29/21	\$ 169,914.00	\$ 169,914.00	8 - Printed	48.4051.618.0059.652
54210124	OFFICE ESSENTIALS INCORPORATED	4/12/21	\$ 16,266.36	\$ 16,266.36	8 - Printed	10.2411.111.1080.641
83210148	OVERDRIVE INC.	4/26/21	\$ 34,207.11	\$ -	0 - Closed	10.2222.355.0075.641
62210248	SOLUTION TREE LLC.	4/1/21	\$ 19,950.00	\$ 19,950.00	8 - Printed	10.2213.805.4035.631
34210006	SUMNERONE INC.	4/21/21	\$ 16,505.00	\$ 16,505.00	8 - Printed	40.2574.506.0085.654
48210262	TANDUS CENTIVA INC.	4/21/21	\$ 112,915.00	\$ 112,915.00	8 - Printed	48.4051.618.3000.652
48210250	WOOD ENVIRONMENT & INFRASTRUCTURE SOLUTIONS,INC	4/1/21	\$ 49,707.00	\$ 49,707.00	8 - Printed	48.4031.618.0070.652
48210254	WOOD ENVIRONMENT & INFRASTRUCTURE SOLUTIONS,INC	4/13/21	\$ 54,505.00	\$ 54,505.00	8 - Printed	48.4031.618.4100.652
48210255	WOOD ENVIRONMENT & INFRASTRUCTURE SOLUTIONS,INC	4/13/21	\$ 61,740.00	\$ 61,740.00	8 - Printed	48.4031.618.4060.652
48210248	WOOD ENVIRONMENT & INFRASTRUCTURE SOLUTIONS,INC	4/1/21	\$ 64,638.00	\$ 64,638.00	8 - Printed	48.4031.618.4130.652
48210249	WOOD ENVIRONMENT & INFRASTRUCTURE SOLUTIONS,INC	4/1/21	\$ 66,822.00	\$ 66,822.00	8 - Printed	48.4031.618.7500.652
<b>TOTAL:</b>			<b>\$ 3,038,558.32</b>			

**SPOT MARKET REPORT - APRIL FY21**

PO #	Create Date	Vendor	Name	Comm. Code	Qty	UOM	Unit Price	Description	Object	Account Amt
61210031	09/28/2020	368	OFFICEMAX/OFFICE DEPOT681	202	840	EACH	\$ 26.78	8.5 x 11 WHITE COPY PAPER - 30% RECYCLED PAPER - DOMTAR	1615	\$ 22,494.00
61210034	10/20/2020	809084	OFFICE ESSENTIALS INCORPORATED	202	840	EACH	\$ 31.18	8.5 x 11 WHITE COPY PAPER - 30% RECYCLED PAPER - UNIVERSAL	1615	\$ 26,191.20
61210042	02/12/2021	809084	OFFICE ESSENTIALS INCORPORATED	202	840	EACH	\$ 27.30	8.5 x 11 WHITE COPY PAPER - 30% RECYCLED PAPER - BOISE ASPEN 30	1615	\$ 22,932.00
85210032	07/10/2020	642477	ENERGY PETROLEUM COMPANY	400	1600	EACH	\$ 1.46	NO LEAD 87 OCT RFG	6486	\$ 2,328.00
85210032					1	EACH	\$ 283.41	FEDERAL AND STATE TAXES AND FEES	6486	\$ 283.41
85210032					400	EACH	\$ 1.46	NO LEAD 87 OCT RFG	6486	\$ 582.00
85210032					1	EACH	\$ 70.85	FEDERAL AND STATE TAXES AND FEES	6486	\$ 70.85
85210032					300	EACH	\$ 1.39	#2 ULTRA PREM LSD	6486	\$ 416.25
85210032					1	EACH	\$ 53.20	FEDERAL AND STATE TAXES AND FEES	6486	\$ 53.20
85210122	07/27/2020	642477	ENERGY PETROLEUM COMPANY	400	1587.5	EACH	\$ 1.47	NO LEAD 87 OCT RFG	6486	\$ 2,333.63
85210122					1	EACH	\$ 281.20	FEDERAL AND STATE TAXES AND FEES	6486	\$ 281.20
85210122					411.1	EACH	\$ 1.47	NO LEAD 87 OCT RFG	6486	\$ 604.32
85210122					1	EACH	\$ 72.82	FEDERAL AND STATE TAXES AND FEES	6486	\$ 72.82
85210122					256.7	EACH	\$ 1.40	#2 ULTRA PREM LSD	6486	\$ 359.38
85210122					1	EACH	\$ 45.53	FEDERAL AND STATE TAXES AND FEES	6486	\$ 45.53
85210128	08/11/2020	642477	ENERGY PETROLEUM COMPANY	400	1000	EACH	\$ 1.38	NO LEAD 87 OCT RFG	6486	\$ 1,380.00
85210128					1	EACH	\$ 177.13	FEDERAL AND STATE TAXES AND FEES	6486	\$ 177.13
85210128					385.1	EACH	\$ 1.38	NO LEAD 87 OCT RFG	6486	\$ 531.44
85210128					1	EACH	\$ 68.22	FEDERAL AND STATE TAXES AND FEES	6486	\$ 68.22
85210128					300	EACH	\$ 1.28	#2 ULTRA PREM LSD	6486	\$ 384.00
85210128					1	EACH	\$ 53.20	FEDERAL AND STATE TAXES AND FEES	6486	\$ 53.20
85210132	08/12/2020	626035	HOME SERVICE OIL CO INC	400	691.6	EACH	\$ 1.34	NO LEAD 87 OCT RFG	6486	\$ 927.09
85210132					1	EACH	\$ 122.49	FEDERAL AND STATE TAXES AND FEES	6486	\$ 122.49
85210132					15.3	EACH	\$ 1.34	NO LEAD 87 OCT RFG	6486	\$ 20.51
85210132					1	EACH	\$ 2.71	FEDERAL AND STATE TAXES AND FEES	6486	\$ 2.71

85210132					405.7	EACH	\$	1.34	NO LEAD 87 OCT RFG	6486	\$	543.84
85210132					1	EACH	\$	71.86	FEDERAL AND STATE TAXES AND FEES	6486	\$	71.86
85210162	09/03/2020	642477	ENERGY PETROLEUM COMPANY	400	2100.6	EACH	\$	1.48	NO LEAD 87 OCT RFG	6486	\$	3,108.89
85210162					1	EACH	\$	372.07	FEDERAL AND STATE TAXES AND FEES	6486	\$	372.07
85210162					400.4	EACH	\$	1.48	NO LEAD 87 OCT RFG	6486	\$	592.59
85210162					1	EACH	\$	70.92	FEDERAL AND STATE TAXES AND FEES	6486	\$	70.92
85210162					400	EACH	\$	1.40	#2 ULTRA PREM LSD	6486	\$	560.00
85210162					1	EACH	\$	70.94	FEDERAL AND STATE TAXES AND FEES	6486	\$	70.94
85210175	09/23/2020	910351	SIEVEKING, INCORPORATED	400	199.9	EACH	\$	1.43	NO LEAD 87 OCT RFG	6486	\$	285.86
85210175					1	EACH	\$	37.22	FEDERAL AND STATE TAXES AND FEES	6486	\$	37.22
85210175					399.9	EACH	\$	1.42	UL SULFUR HI-WAY DIESEL	6486	\$	567.86
85210175					1	EACH	\$	72.06	FEDERAL AND STATE TAXES AND FEES	6486	\$	72.06
85210175					1000	EACH	\$	1.43	NO LEAD 87 OCT RFG	6486	\$	1,430.00
85210175					1	EACH	\$	179.00	FEDERAL AND STATE TAXES AND FEES	6486	\$	179.00
85210193	10/09/2020	642477	ENERGY PETROLEUM COMPANY	400	1996.2	EACH	\$	1.32	NO LEAD 87 OCT RFG	6486	\$	2,634.98
85210193					1	EACH	\$	353.59	FEDERAL AND STATE TAXES AND FEES	6486	\$	353.59
85210193					400.4	EACH	\$	1.32	NO LEAD 87 OCT RFG	6486	\$	528.53
85210193					1	EACH	\$	70.92	FEDERAL AND STATE TAXES AND FEES	6486	\$	70.92
85210193					313.3	EACH	\$	1.23	PREMIUM LOW SULFUR CLEAR DIESEL	6486	\$	383.79
85210193					1	EACH	\$	55.56	FEDERAL AND STATE TAXES AND FEES	6486	\$	55.56
85210222	11/05/2020	642477	ENERGY PETROLEUM COMPANY	400	1576.2	EACH	\$	1.34	NO LEAD 87 OCT RFG	6486	\$	2,117.94
85210222					1	EACH	\$	279.19	FEDERAL AND STATE TAXES AND FEES	6486	\$	279.19
85210222					424.9	EACH	\$	1.34	NO LEAD 87 OCT RFG	6486	\$	570.94
85210222					1	EACH	\$	75.26	FEDERAL AND STATE TAXES AND FEES	6486	\$	75.26

85210222					320.3	EACH	\$	1.34	PREMIUM LOW SULFUR CLEAR DIESEL	6486	\$	430.39
85210222					1	EACH	\$	56.80	FEDERAL AND STATE TAXES AND FEES	6486	\$	56.80
85210237	11/20/2020	642477	ENERGY PETROLEUM COMPANY	400	420	EACH	\$	1.35	NO LEAD 87 OCT RFG	6486	\$	567.00
85210237					1	EACH	\$	74.39	FEDERAL AND STATE TAXES AND FEES	6486	\$	74.39
85210237					2160.7	EACH	\$	1.35	NO LEAD 87 OCT RFG	6486	\$	2,916.95
85210237					1	EACH	\$	382.72	FEDERAL AND STATE TAXES AND FEES	6486	\$	382.72
85210291	02/12/2021	642477	ENERGY PETROLEUM COMPANY	400	3067.4	EACH	\$	1.67	NO LEAD 87 OCT RFG	6486	\$	5,122.56
85210291					1	EACH	\$	543.33	FEDERAL AND STATE TAXES AND FEES	6486	\$	543.33
85210291					250	EACH	\$	1.75	#2 ULTRA PREMIUM LSD	6486	\$	437.50
85210291					1	EACH	\$	44.34	FEDERAL AND STATE TAXES AND FEES	6486	\$	44.34
85210291					419.7	EACH	\$	1.67	NO LEAD 87 OCT RFG	6486	\$	700.90
85210291					1	EACH	\$	74.35	FEDERAL AND STATE TAXES AND FEES	6486	\$	74.35
85210295	02/26/2021	910351	SIEVEKING, INCORPORATED	400	3200	EACH	\$	1.94	NO LEAD 87 OCT RFG	6486	\$	6,208.00
85210295					1	EACH	\$	559.84	FEDERAL AND STATE TAXES AND FEES	6486	\$	559.84
85210295					410	EACH	\$	1.98	UL SULFUR HI-WAY DIESEL	6486	\$	811.80
85210295					1	EACH	\$	73.82	FEDERAL AND STATE TAXES AND FEES	6486	\$	73.82
85210320	03/18/2021	910351	SIEVEKING, INCORPORATED	400	1780.2	EACH	\$	2.02	NO LEAD 87 OCT RFG	6486	\$	3,596.00
85210320					1	EACH	\$	314.91	FEDERAL AND STATE TAXES AND FEES	6486	\$	314.91
85210320					420	EACH	\$	2.02	NO LEAD 87 OCT RFG	6486	\$	848.40
85210320					1	EACH	\$	77.96	FEDERAL AND STATE TAXES AND FEES	6486	\$	77.96
85210348	04/27/2021	800559	KIESEL COMPANY	400	1968.6	EACH		2.09	NO LEAD 87 OCT RFG	6486	\$	4,114.37
85210348					1	EACH		711.2	FEDERAL AND STATE TAXES AND FEES	6486	\$	711.20
85210348					422.7	EACH		2.09	NO LEAD 87 OCT RFG	6486	\$	883.44

85210348					1	EACH		154.49	FEDERAL AND STATE TAXES	6486	\$	154.49
									AND FEES			
97210048	10/16/2020	642477	ENERGY PETROLEUM COMPANY	500	7500	EACH	\$	1.25	PREMIUM ULTRAL LOW SULFUR #2 DIESEL FUEL	6486	\$	9,337.50
97210048					7500	EACH	\$	0.00	FED OIL SPILL FEE	6486	\$	16.05
97210048					7500	EACH	\$	0.00	MO. AGI TAX PER GAL. EXTRA	6486	\$	7.50
97210048					7500	EACH	\$	0.17	MO STATE TAX PER GAL	6486	\$	1,275.00
97210048					7500	EACH	\$	0.00	MO ADG INSP. FEE TAX PER GAL	6486	\$	5.25
97210048					7500	EACH	\$	0.00	MO USTD TRANSP. LOAD FEE TAX PER GAL	6486	\$	18.75
97210054	11/19/2020	910351	SIEVEKING, INCORPORATED	500	7500	EACH	\$	1.45	PREMIUM ULTRA LOW SULFUR#2 DIESEL FUEL TREATED	6486	\$	10,857.75
97210054					7500	EACH	\$	0.00	FED OIL SPILL FEE	6486	\$	16.05
97210054					7500	EACH	\$	0.00	MO AGI TAX PER GAL EXTRA	6486	\$	7.50
97210054					7500	EACH	\$	0.17	MO STATE TAX PER GAL	6486	\$	1,275.00
97210054					7500	EACH	\$	0.00	MO ADG INSP FEE TAX PER GAL	6486	\$	5.25
97210054					7500	EACH	\$	0.00	MO USTD TRANSP LOAD FEE TAX PER GAL	6486	\$	18.75
97210064	01/07/2021	642477	ENERGY PETROLEUM COMPANY	500	7500	EACH	\$	1.58	PREMIUM ULTRAL LOW SULFUR #2 DIESEL FUEL	6486	\$	11,850.00
97210064					7500	EACH	\$	0.00	FED OIL SPILL FEE	6486	\$	16.05
97210064					7500	EACH	\$	0.00	MO. AGI TAX PER GAL EXTRA	6486	\$	7.50
97210064					7500	EACH	\$	0.17	MO STATE TAX PER GAL	6486	\$	1,275.00
97210064					7500	EACH	\$	0.00	MO. ADG INSP. FEE TAX PER GAL	6486	\$	5.25
97210064					7500	EACH	\$	0.00	MO USTD TRANSP. LOAD FEE TAX PER GAL	6486	\$	18.75
97210071	02/04/2021	626035	HOME SERVICE OIL CO INC	500	7500	EACH	\$	1.70	PREMIUM ULTRA LOW SULFUR #2 DIESEL TREATED	6486	\$	12,774.00
97210071					7500	EACH	\$	0.00	FED OIL SPIL FEE	6486	\$	16.05
97210071					7500	EACH	\$	0.00	MO AGI TAX PER GAL EXTRA	6486	\$	7.50
97210071					7500	EACH	\$	0.17	MO STATE TAX PER GAL	6486	\$	1,275.00
97210071					7500	EACH	\$	0.00	MO ADG INSP. FEE TAX PER GAL	6486	\$	5.25
97210071					7500	EACH	\$	0.00	MO USTD TRANSP. LOAD FEE TAX PER GAL	6486	\$	18.75
97210076	03/01/2021	626035	HOME SERVICE OIL CO INC	500	7500	EACH	\$	1.99	PREMIUM ULTRAL LOW SULFUR #2 DIESEL FUEL	6486	\$	14,956.50
97210076					7500	EACH	\$	0.00	FED OIL SPILL FEE	6486	\$	16.05
97210076					7500	EACH	\$	0.00	MO. AGITAX PER GAL EXTRA	6486	\$	7.50
97210076					7500	EACH	\$	0.17	MO STATE TAX PER GAL	6486	\$	1,275.00

97210076					7500	EACH	\$	0.00	MO ADG INSP FEE TAX PER GAL	6486	\$	5.25
97210076					7500	EACH	\$	0.00	MO USTD TRANSP. LOAD FEE TAX PER GAL	6486	\$	18.75
97210081	03/19/2021	642477	ENERGY PETROLEUM COM	500	7500	EACH	\$	2.10	PREMIUM, ULTRA LOW SULFER, #2 DIESEL	6486	\$	15,731.25
97210081					7500	EACH	\$	0.00	FEDERAL OIL SPILL FEE	6486	\$	16.05
97210081					7500	EACH	\$	0.00	MO. AGI TAX PER GAL. EXTRA	6486	\$	7.50
97210081					7500	EACH	\$	0.17	MO STATE TAX PER GAL.	6486	\$	1,275.00
97210081					7500	EACH	\$	0.00	MO ADG. INSP. FEE TAX PER GAL.	6486	\$	5.25
97210081					7500	EACH	\$	0.00	MO USTD TRANSP. LOAD FEE TAX PER GAL.	6486	\$	18.75
85210286	02/11/2021	632285	DUTCH HOLLOW SERVICES & SUPPLIES INC.	401	300	EACH	\$	17.29	40" X 48" - 16 MICRON HIGH DENSITY ONLY - CLEAR STAR SEALED TRASH CAN LINERS (250/CASE) SSS #N404816CR ***** ONLY 50 CASES / PALLET *****	6411	\$	5,187.00
85210286					200	EACH	\$	7.29	24" X 23" - 0.4 MIL LINEAR LOW DENSITY ONLY - CLEAR STAR SEALED TRASH CAN LINERS (500/CASE) SSS #SX25C ***** ONLY 100 CASES / PALLET *****	6411	\$	1,458.00
85210287	02/11/2021	800066	INDUSTRIAL SOAP CO	401	320	EACH	\$	12.98	33" X 39" - 1.3 MIL - LINEAR LOW DENSITY ONLY CLEAR - STAR SEALED (125/CASE) PITT PLASTICS #P4040XC ***** ONLY 106 CASES / PALLET *****	6411	\$	4,152.00
Total Commodity 202 (Paper)											\$	71,617.20

<b>Total Commodity 400 (Fuel - Facilities)</b>	\$ 55,836.65
<b>Total Commodity 500 (Fuel - Transportation)</b>	\$ 83,442.30
<b>Total Commodity 401 (Trash Liners)</b>	\$ 10,797.00
<b>Total Commodity 700 (Produce)</b>	<u><u>\$ -</u></u>
<b>Grand Total All Commodity</b>	<b>\$ 221,693.15</b>